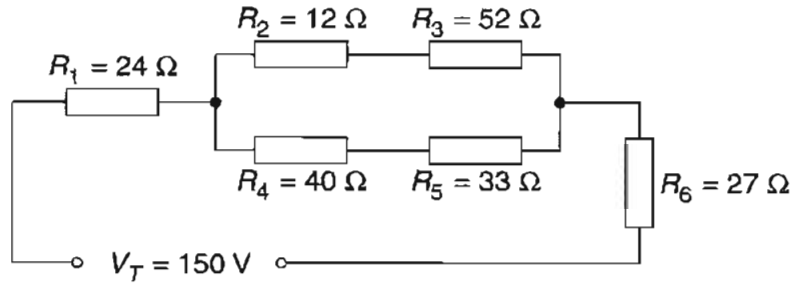


Question 24 (3 marks)

Calculate the total resistance of the electrical circuit shown. Show all your working in the space provided.

3



$12 + 52 = 64$ $40 + 33 = 73$

$\frac{1}{\frac{1}{64} + \frac{1}{73}} = 34.1$

$R_T = 85.1 \Omega$ $24 + 34.1 + 27 = 85.1$

$R_T = 85.1 \Omega$