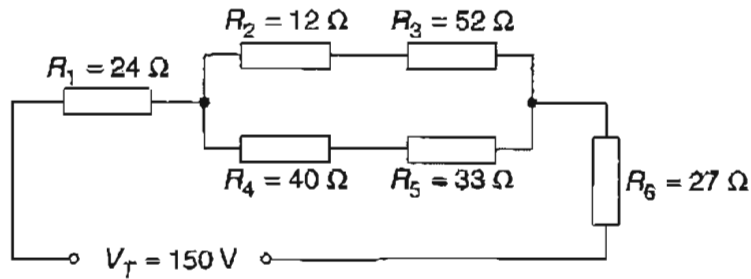


Question 24 (3 marks)

Calculate the total resistance of the electrical circuit shown. Show all your working in the space provided.

3



$$\begin{aligned}
 & R_1 + R_6 \quad \frac{1}{\frac{1}{R_2} + \frac{1}{R_3} + \frac{1}{R_4} + \frac{1}{R_5}} = \frac{1}{1} \\
 & = \quad \frac{1}{\frac{1}{12} + \frac{1}{52} + \frac{1}{40} + \frac{1}{33}} = 6.33 \\
 & 24 + 27 = 51 \Omega \quad \underline{\underline{57.33 \Omega}}
 \end{aligned}$$