

BODY OF WORK

DRAWING

BAND 3/4

TITLE:

EXPRESSIONS OF HAPPINESS



DETAIL

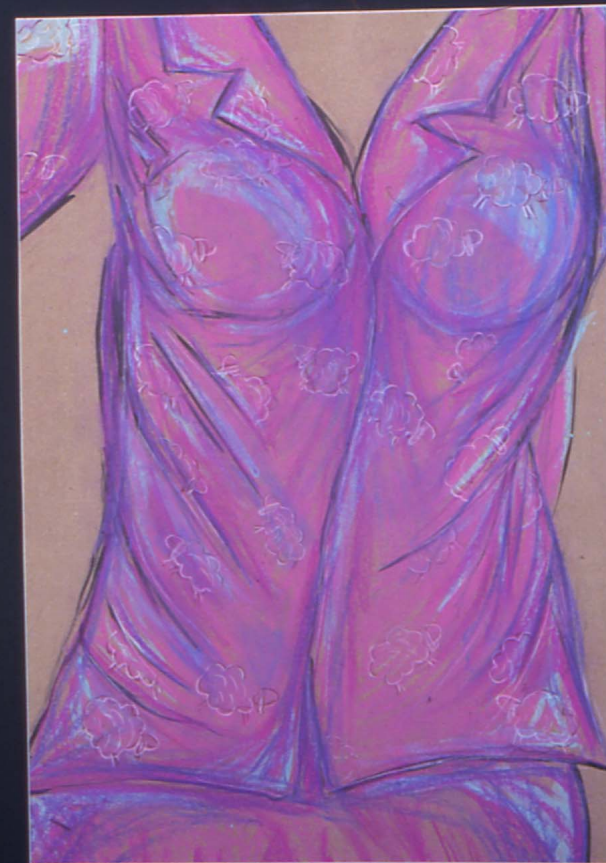
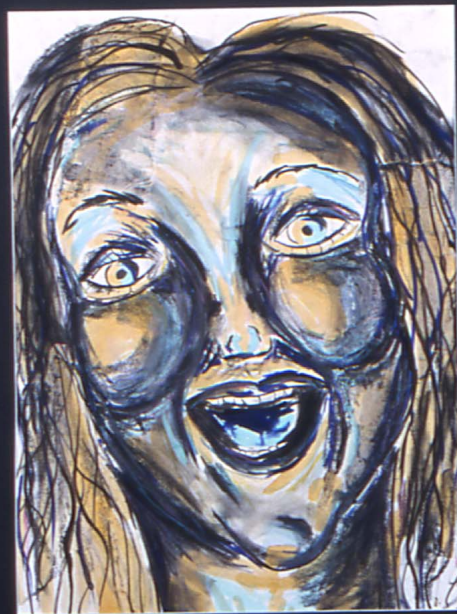
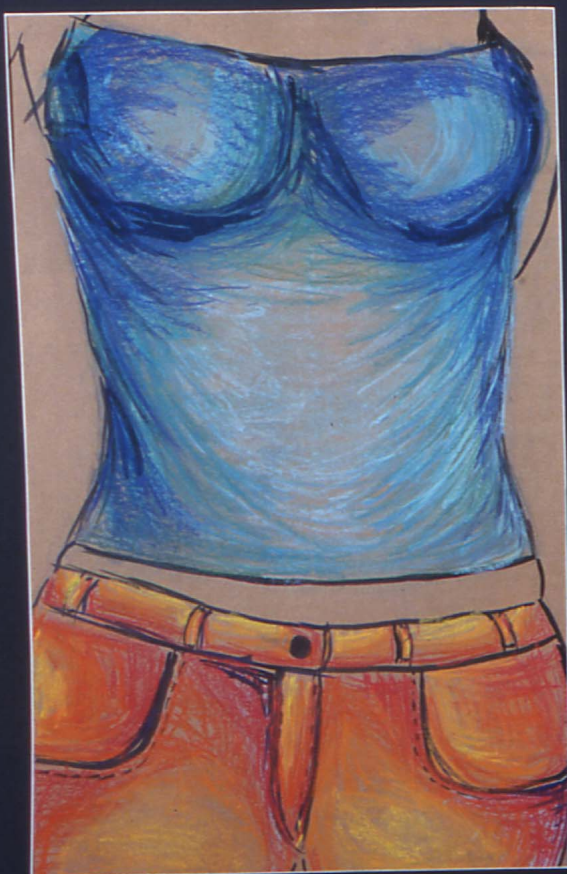
BODY OF WORK

DRAWING

BAND 3/4

TITLE:

EXPRESSIONS OF HAPPINESS



DETAIL

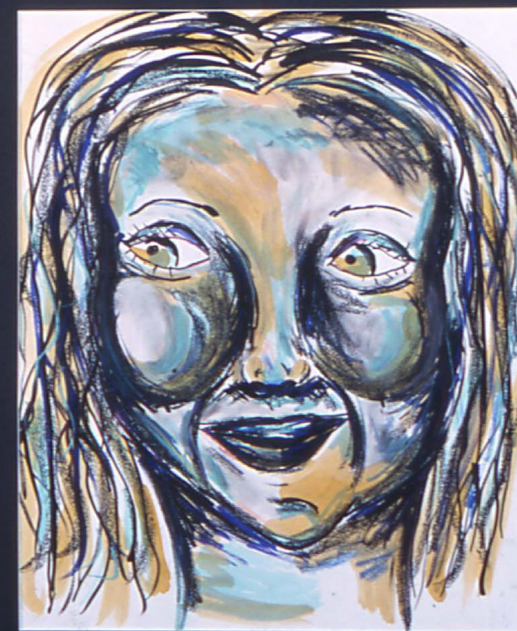
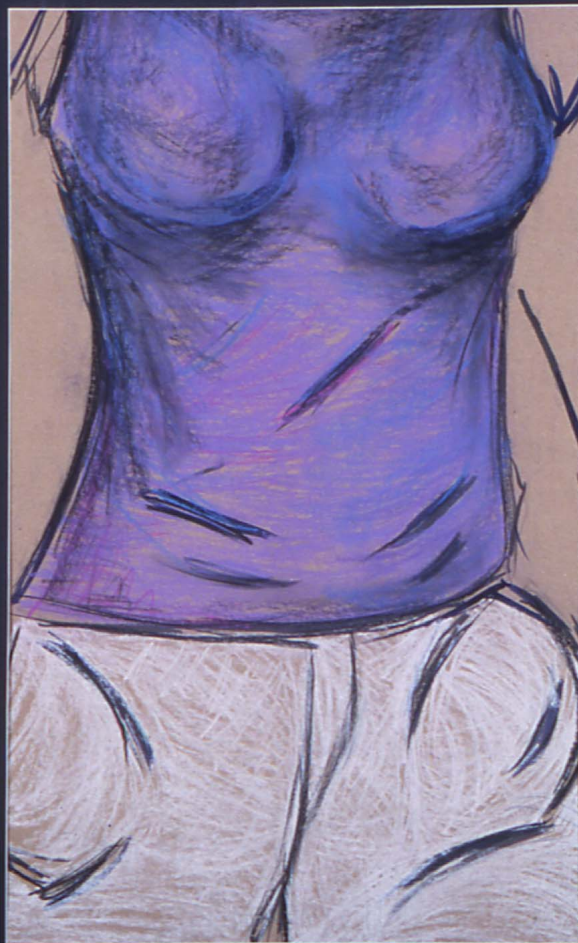
BODY OF WORK

DRAWING

BAND 3/4

TITLE:

EXPRESSIONS OF HAPPINESS



DETAIL

BODY OF WORK

DRAWING

BAND 3/4

TITLE:

EXPRESSIONS OF HAPPINESS



DETAIL

BODY OF WORK

DRAWING

BAND 3/4

TITLE:

EXPRESSIONS OF HAPPINESS

NO. OF WORKS: 9
SIZE: one – 730 x 610mm
four – 780 x 610mm
four – 1.4m x 810mm

ON WHAT TERMS SHOULD WE CONSIDER THE BODY OF WORK?

WHAT IS THE STUDENT TRYING TO DO?

WHAT IS THE EFFECT OF THE BODY OF WORK ON US?

“Expressions of Happiness” is a series of drawings using four portrait studies as a departure point. This is a substantial body of work involving studies in pastel, dry point etching, ink and wash. The theme is happiness. The theme is presented through facial expression and torso images made using colour and line. Some of the works combine faces within the same image; others create combinations through mounting.

EXPLANATION

IN WHAT WAYS ARE CONCEPTUAL AND MATERIAL PRACTICE REPRESENTED?

The main focus of this work is on a simple concept of facial expressions and colour to convey a sense of vitality and happiness. Material practice evidences line work that is joyous, expressive and fluid, sometimes verging on being overworked. Line work is more successful as expressive mark than as a representation of understood facial structure. Simple variations of colour enhance the exuberant quality of the line. Thin pastel blending has been used with line to suggest form in the torsos.

JUDGEMENT

HOW DOES THE STUDENT’S CONCEPTUAL AND MATERIAL PRACTICE COMPARE TO THE DESCRIPTIVE STATEMENTS IN THE MARKING GUIDELINES?

This work is placed in the middle of the C Mark Range because of the simple, but effective fit between the expressive use of line and the concept of happiness. This fit is present in almost all of the face images and assists in producing some degree of cheerful coherence across the series of drawings. This work is also placed in the middle of the C Mark Range because there is little variation and little sense of development of technical skills or exploration of representation across the body of work. The dry point engravings have the same happy attractiveness as the ink and wash works but little sense of the potential of a different expressive form. The torsos represent an opening up of the conceptual focus of the work but lack the expressive verve of the faces.