

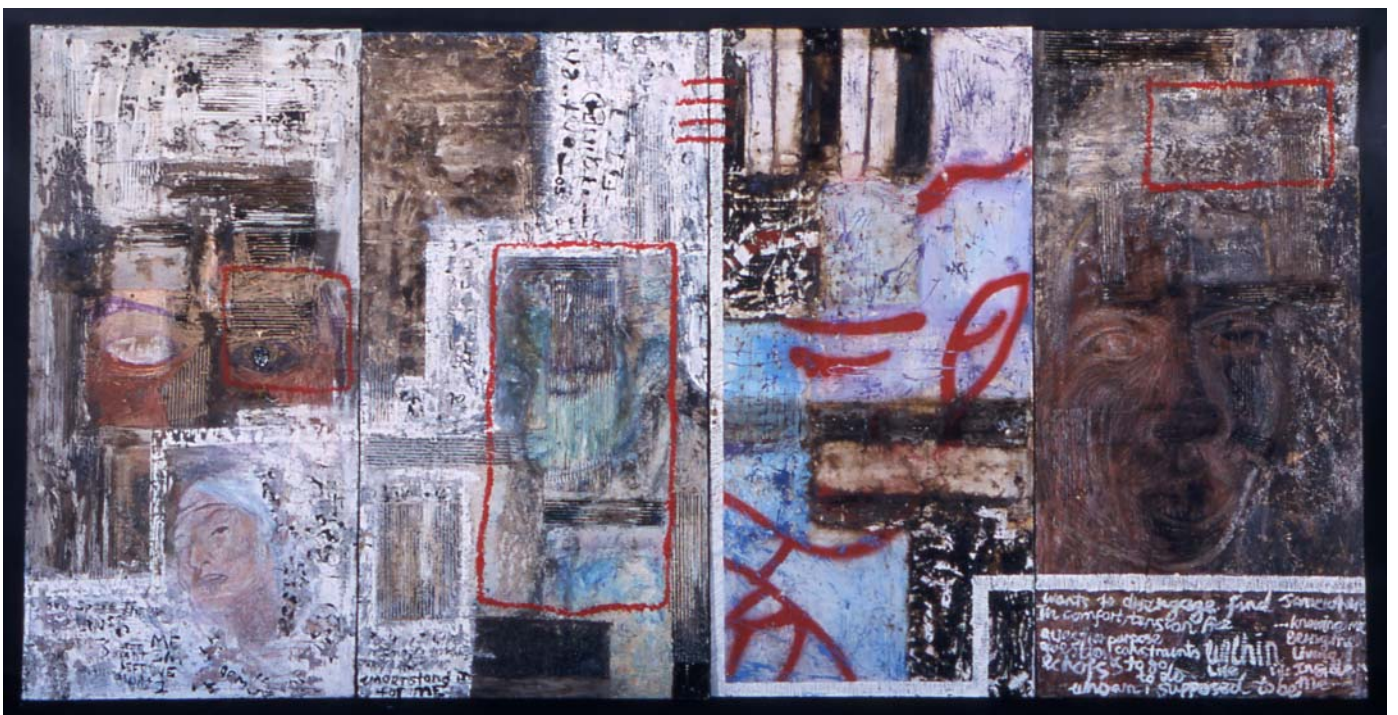
THE BODY OF WORK

COLLECTION OF WORKS

BAND 5/6

TITLE:

ID



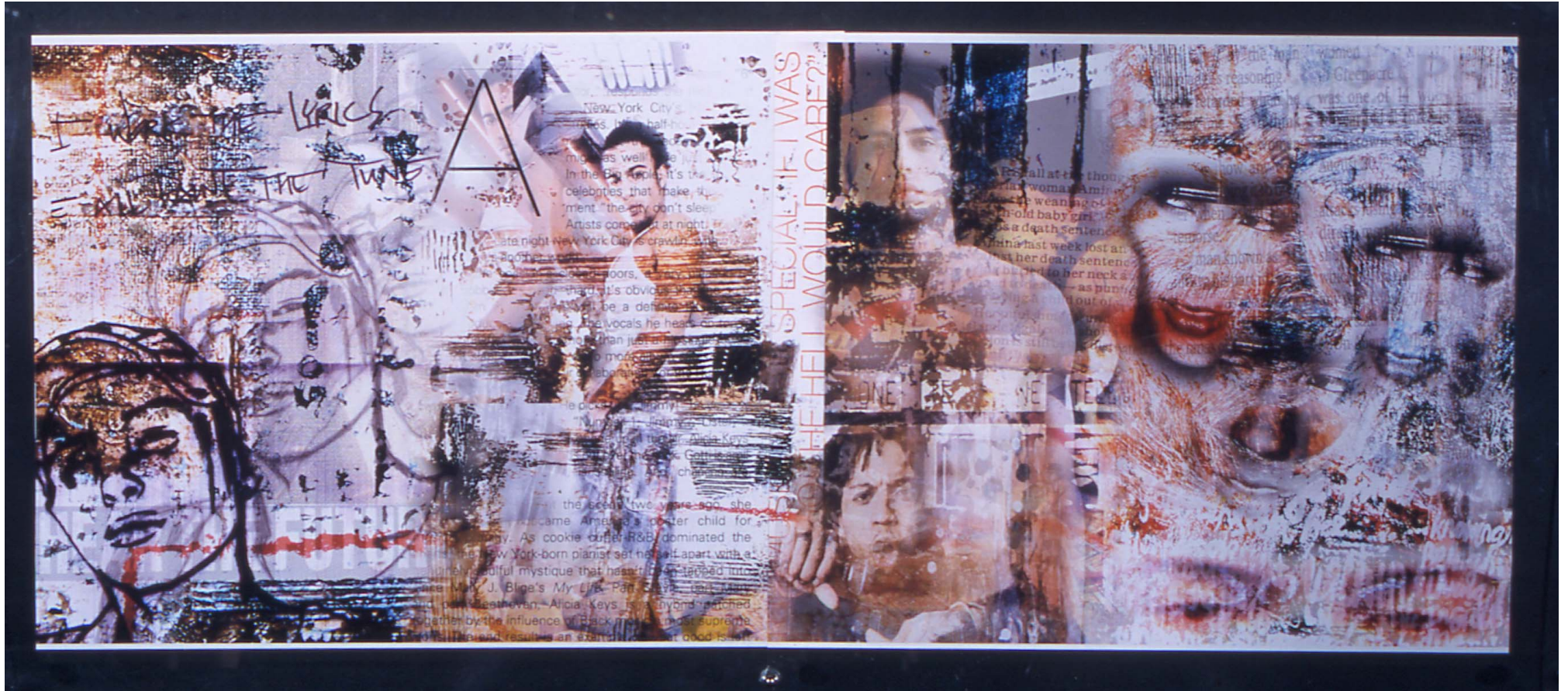
THE BODY OF WORK

COLLECTION OF WORKS

BAND 5/6

TITLE:

ID



DETAIL

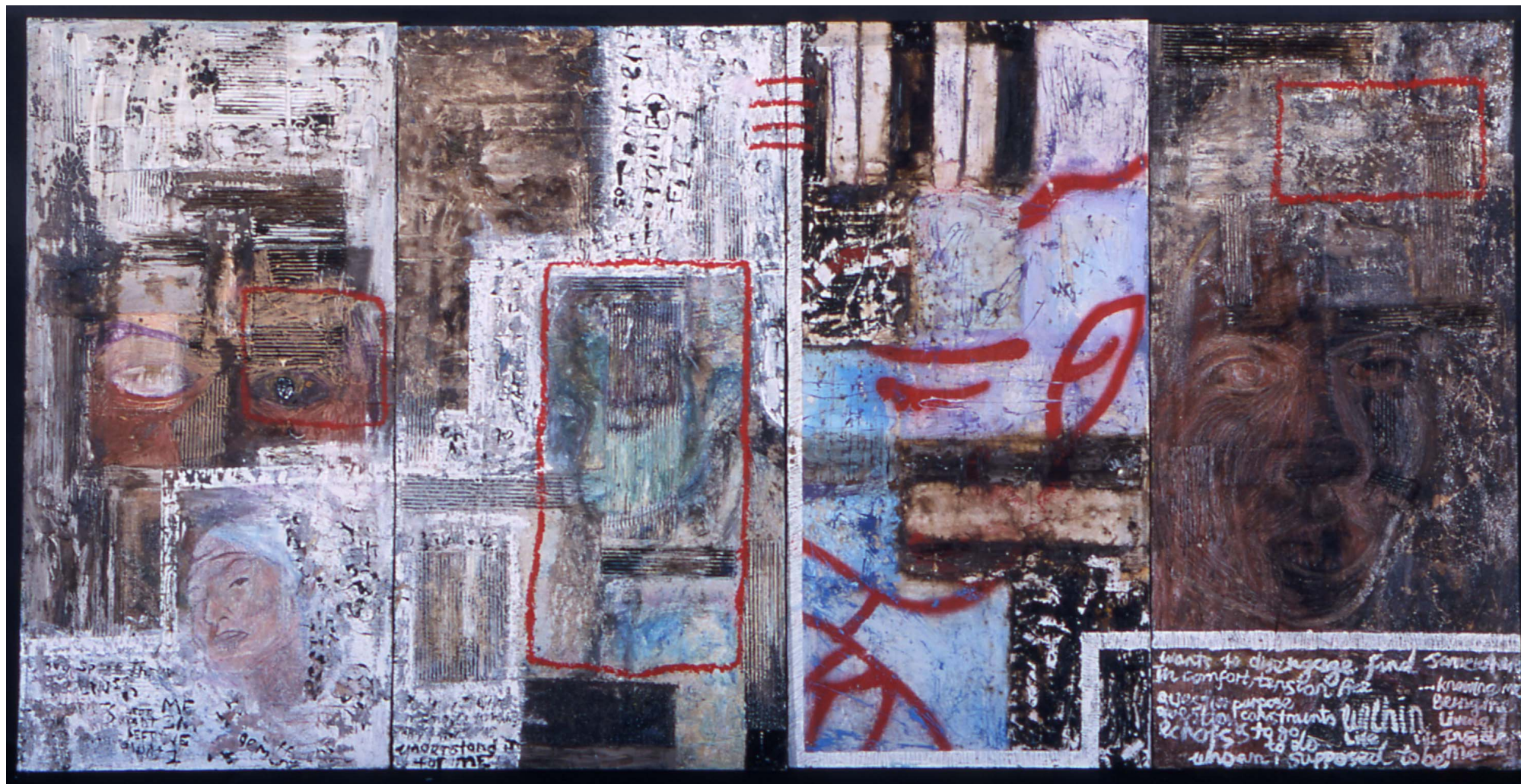
THE BODY OF WORK

COLLECTION OF WORKS

BAND 5/6

TITLE:

ID



DETAIL

THE BODY OF WORK

COLLECTION OF WORKS

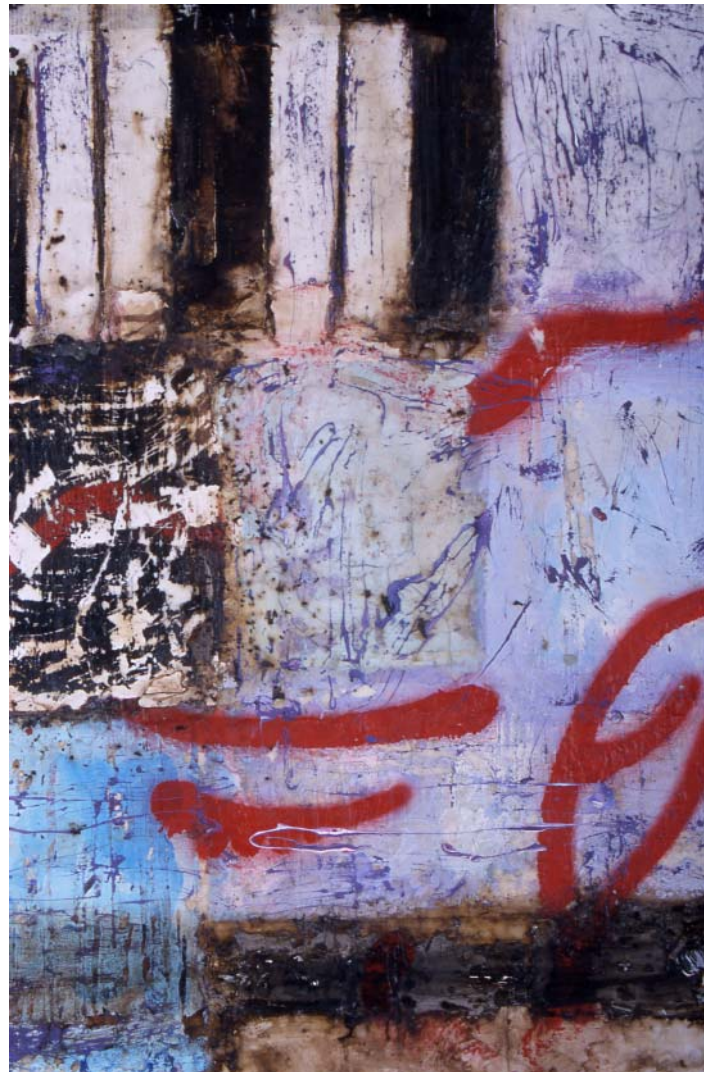
BAND 5/6

TITLE:

ID



DETAIL



DETAIL

THE BODY OF WORK

COLLECTION OF WORKS

BAND 5/6

TITLE:

ID

NO. OF WORKS: 5
SIZE: four – 1200 x 580mm
one – 1150 x 530mm

ON WHAT TERMS SHOULD WE CONSIDER THE BODY OF WORK?

WHAT IS THE STUDENT TRYING TO DO?

WHAT IS THE EFFECT OF THE BODY OF WORK ON US?

This work consists of four painted panels and a digital collaged image referencing fragmented faces obscured by an encrusted layering of texture, collage and subtly coloured and sgraffitoed surfaces. The work suggests the ghetto, urban poverty and the struggle of youth to find an identity within society, and a voice amid the inexorable urban clutter with its edge of violence. It is an evocative work which rewards a sustained engagement by the audience.

EXPLANATION

IN WHAT WAYS ARE CONCEPTUAL AND MATERIAL PRACTICE REPRESENTED?

Notions of isolation, confusion and security are confidently described using metaphors, symbols and text. Concepts are integrated within the layers of the surfaces, reiterating ideas of memory, dislocation through rhythmic patterns of images and text. The digital work consists of scanned portraits and text presented in layers referencing the music world mirroring the layered, intricate surfaces of the paintings.

The highly evocative and rich surfaces of the paintings have been created using spray painting, glazes, sgraffito, and encaustic. The intuitive and experimental nature of this work suggests an understanding of art practice, painting techniques, conventions of representation and mark making.

JUDGEMENT

HOW DOES THE STUDENT'S CONCEPTUAL AND MATERIAL PRACTICE COMPARE TO THE DESCRIPTIVE STATEMENTS IN THE MARKING GUIDELINES?

This is a sustained and informed body of work demonstrating a range of painting techniques and treatment of surfaces with some subtle layering of paint, mark making and gestural qualities. While the faces are less well integrated in places, the work is generally sustained and the panels are confidently painted with an understanding of how meanings and associations can be subtly suggested through surface, colour and text. These sensitive and tactile painted panels transcend the more exploratory digital panel.

There is evidence of a sustained and considered judgement and deep investigation informed by a knowledge of contemporary art practice.