

## Textiles and Design

## Section II (continued)

Marks

## Question 13 — Properties and Performance of Textiles (10 marks)

- (a) Explain how a finishing technique can be used to enhance fabric performance for a specific end-use. 2

Such as Scotchgarding a product such as lounge sweater. This is done to improve the performance of the material so it does not ~~stain~~ <sup>stain</sup> easily or rip that easy & it looks after the material.

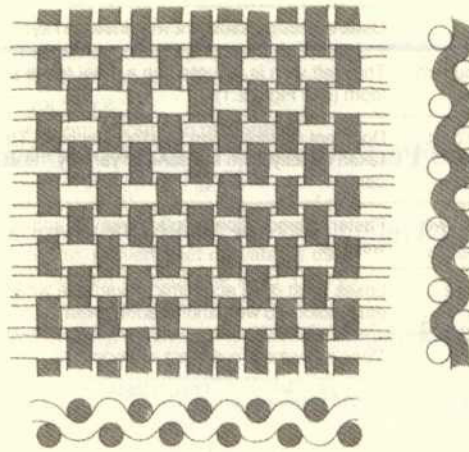
- (b) Explain the impact ONE technological advance in machinery has had on the production of textiles. 2

~~The~~ ~~the~~ Carcading ~~comp~~ with the fabric going through a machine with little teeth pulling out the dirt and out of the material before being sent away to producing a web like material over the fabric so not dirt and can get into the fabric.

Question 13 continues on page 10

## Question 13 (continued)

- (c) Identify the fabric structure in the diagram. Explain why it is an appropriate structure for a cotton hat. 2



Woven its appropriate as its a hat & stepping to sun from comings through the over & under steps alot of the sun coming through. This weaving of the fibres makes it strong durable to the climate. & will stay together for a long time.

- (d) (i) Identify a specific end-use that requires excellent abrasion resistance in a fabric. 1

Scotch grading

- (ii) Describe how the fabric structure, yarn structure and fibre content optimise abrasion resistance. 3

As the structure of the yarn & fibre is not as tight & as strong but its abrasion resistance by doing so it makes the fibre better to work with and wear. makes it better for conditions & washing & wearing. outside, inside.

End of Question 13