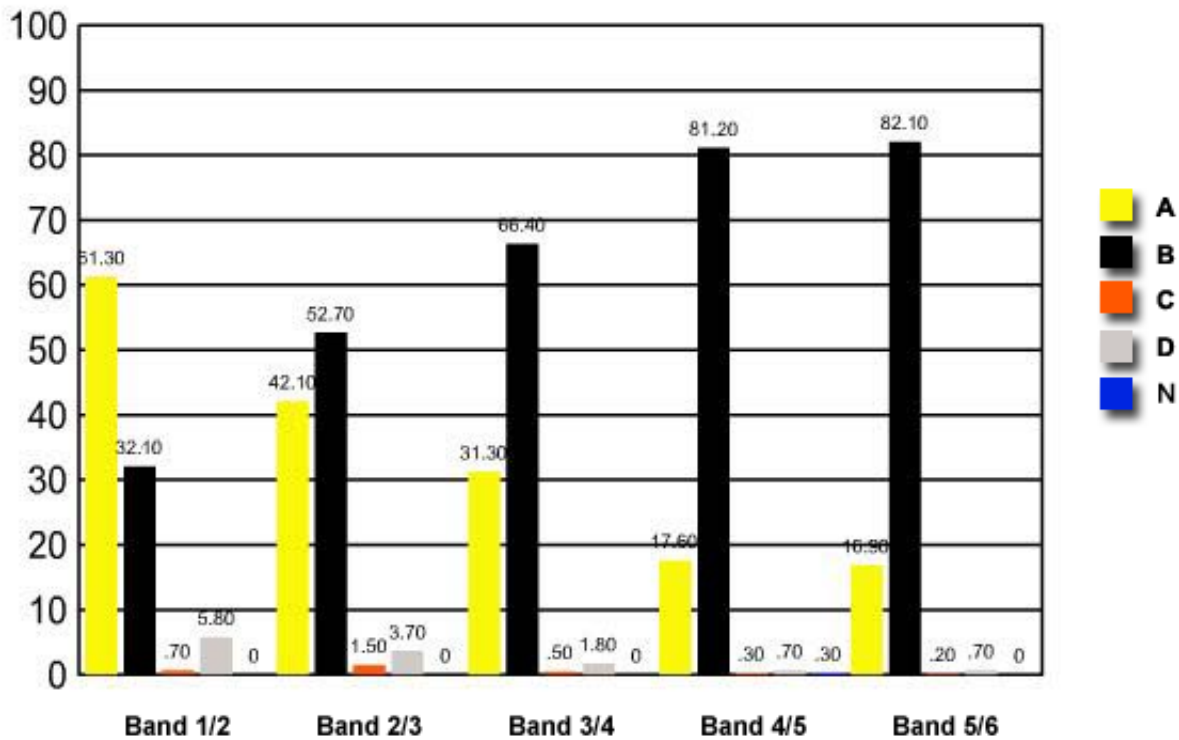


1 If an Aboriginal elder describes the spiritual ancestry of his people, what is he referring to?

- (A) Their native title
- ✓ (B) Their totemic symbol
- (C) Their main source of food
- (D) Their most common local animal

|          | <i>Band 1/2</i> | <i>Band 2/3</i> | <i>Band 3/4</i> | <i>Band 4/5</i> | <i>Band 5/6</i> |
|----------|-----------------|-----------------|-----------------|-----------------|-----------------|
| <b>A</b> | 61.30           | 42.10           | 31.30           | 17.60           | 16.90           |
| <b>B</b> | 32.10           | 52.70           | 66.40           | 81.20           | 82.10           |
| <b>C</b> | 0.70            | 1.50            | 0.50            | 0.30            | 0.20            |
| <b>D</b> | 5.80            | 3.70            | 1.80            | 0.70            | 0.70            |
| <b>N</b> | 0               | 0               | 0               | 0.30            | 0               |

Question 1 : % answers correct by band range



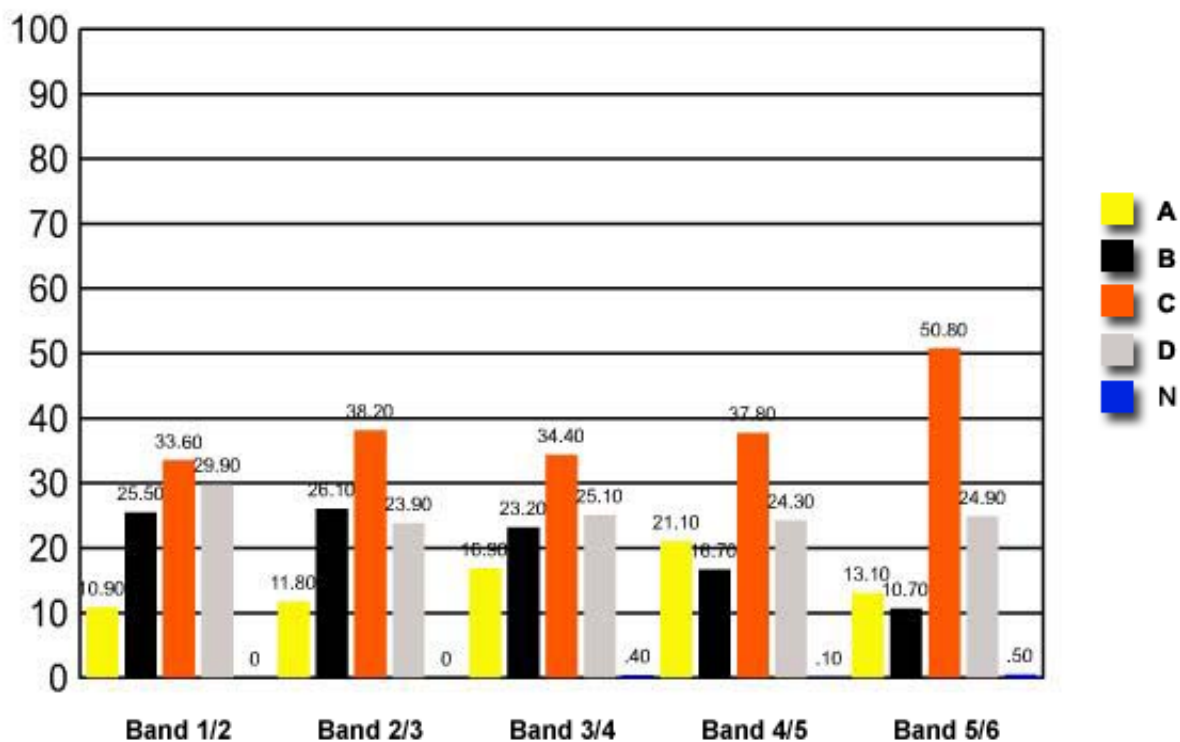
The table and graph show, for the groups of students whose marks in the examination corresponded to the borderline between two bands, what percentages of each group selected the responses A, B, C and D. N is used to identify: No valid response.

2 Which of the following churches had the lowest proportion of its members join the Uniting Church in 1977?

- (A) The Church of Christ
- (B) The Methodist Church
- ✓ (C) The Presbyterian Church
- (D) The Congregational Church

|          | <b>Band 1/2</b> | <b>Band 2/3</b> | <b>Band 3/4</b> | <b>Band 4/5</b> | <b>Band 5/6</b> |
|----------|-----------------|-----------------|-----------------|-----------------|-----------------|
| <b>A</b> | 10.90           | 11.80           | 16.90           | 21.10           | 13.10           |
| <b>B</b> | 25.50           | 26.10           | 23.20           | 16.70           | 10.70           |
| <b>C</b> | <b>33.60</b>    | <b>38.20</b>    | <b>34.40</b>    | <b>37.80</b>    | <b>50.80</b>    |
| <b>D</b> | 29.90           | 23.90           | 25.10           | 24.30           | 24.90           |
| <b>N</b> | 0               | 0               | 0.40            | 0.10            | 0.50            |

Question 2 : % answers correct by band range



The table and graph show, for the groups of students whose marks in the examination corresponded to the borderline between two bands, what percentages of each group selected the responses A, B, C and D. N is used to identify: No valid response.

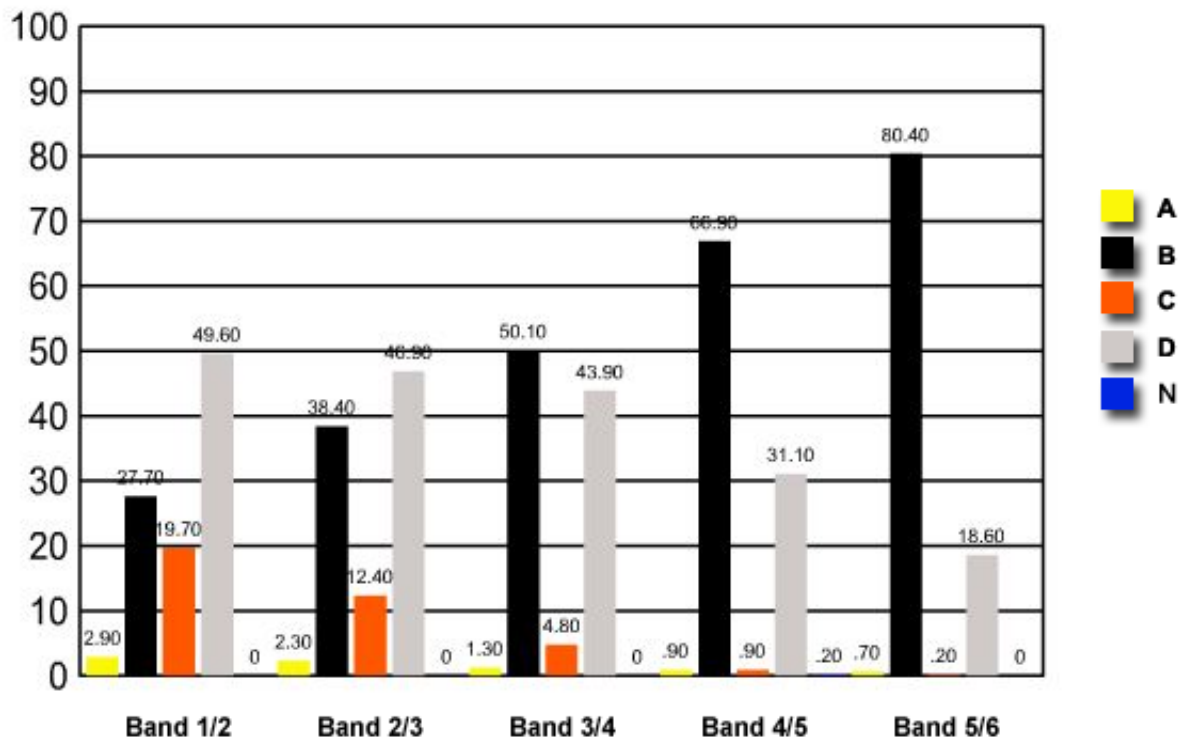
3 Which of the following has focused its Christian ministry on rural and outback Australia?

- (A) The School of the Air
- ✓ (B) The Bush Church Aid Society
- (C) The St Vincent de Paul Society
- (D) The Royal Flying Doctor Service

**Band 1/2 Band 2/3 Band 3/4 Band 4/5 Band 5/6**

|          |              |              |              |              |              |
|----------|--------------|--------------|--------------|--------------|--------------|
| <b>A</b> | 2.90         | 2.30         | 1.30         | 0.90         | 0.70         |
| <b>B</b> | <b>27.70</b> | <b>38.40</b> | <b>50.10</b> | <b>66.90</b> | <b>80.40</b> |
| <b>C</b> | 19.70        | 12.40        | 4.80         | 0.90         | 0.20         |
| <b>D</b> | 49.60        | 46.90        | 43.90        | 31.10        | 18.60        |
| <b>N</b> | 0            | 0            | 0            | 0.20         | 0            |

Question 3 : % answers correct by band range



The table and graph show, for the groups of students whose marks in the examination corresponded to the borderline between two bands, what percentages of each group selected the responses A, B, C and D. N is used to identify: No valid response.

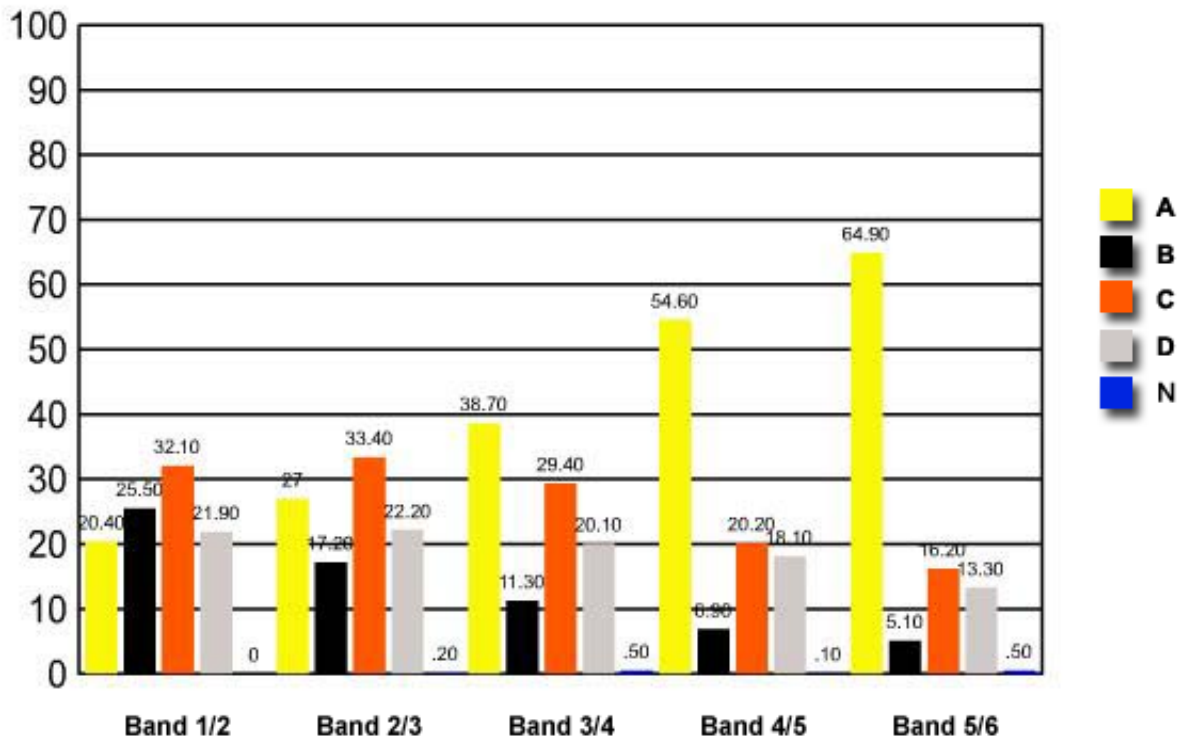
4 Which of the following was not integral to the arguments presented by the Aboriginal people in support of traditional land ownership in Wik and Mabo?

- ✓ (A) The Torrens Title system
- (B) The locations of the totems
- (C) The Stories of the Dreaming
- (D) The elders' customary possession

**Band 1/2   Band 2/3   Band 3/4   Band 4/5   Band 5/6**

|          | <b>20.40</b> | <b>27</b> | <b>38.70</b> | <b>54.60</b> | <b>64.90</b> |
|----------|--------------|-----------|--------------|--------------|--------------|
| <b>A</b> | 20.40        | 27        | 38.70        | 54.60        | 64.90        |
| <b>B</b> | 25.50        | 17.20     | 11.30        | 6.90         | 5.10         |
| <b>C</b> | 32.10        | 33.40     | 29.40        | 20.20        | 16.20        |
| <b>D</b> | 21.90        | 22.20     | 20.10        | 18.10        | 13.30        |
| <b>N</b> | 0            | 0.20      | 0.50         | 0.10         | 0.50         |

Question 4 : % answers correct by band range



The table and graph show, for the groups of students whose marks in the examination corresponded to the borderline between two bands, what percentages of each group selected the responses A, B, C and D. N is used to identify: No valid response.

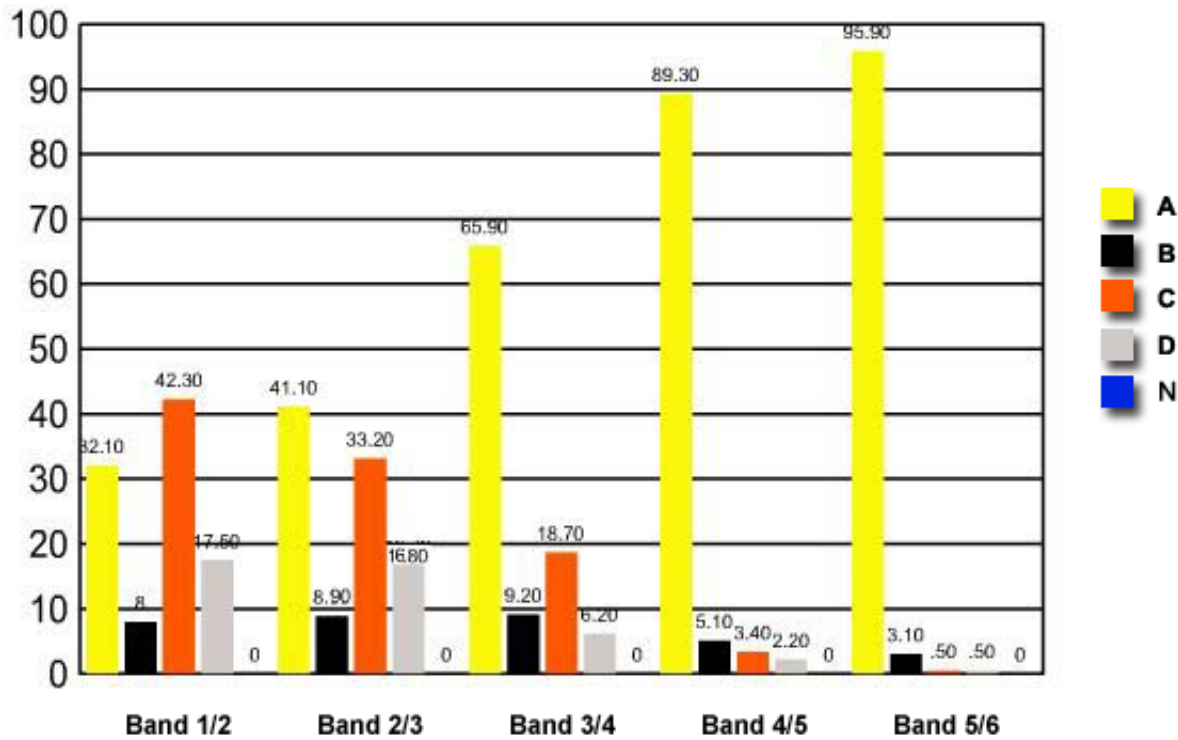
5 Which best explains the growth in Pentecostalism in Australia from 150 665 members in 1991 to 174 720 members in 1996?

- ✓ (A) Denominational switching
- (B) Evangelism
- (C) Immigration
- (D) Population increase

**Band 1/2 Band 2/3 Band 3/4 Band 4/5 Band 5/6**

|          | <b>32.10</b> | <b>41.10</b> | <b>65.90</b> | <b>89.30</b> | <b>95.90</b> |
|----------|--------------|--------------|--------------|--------------|--------------|
| <b>A</b> | 32.10        | 41.10        | 65.90        | 89.30        | 95.90        |
| <b>B</b> | 8            | 8.90         | 9.20         | 5.10         | 3.10         |
| <b>C</b> | 42.30        | 33.20        | 18.70        | 3.40         | 0.50         |
| <b>D</b> | 17.50        | 16.80        | 6.20         | 2.20         | 0.50         |
| <b>N</b> | 0            | 0            | 0            | 0            | 0            |

Question 5 : % answers correct by band range



The table and graph show, for the groups of students whose marks in the examination corresponded to the borderline between two bands, what percentages of each group selected the responses A, B, C and D. N is used to identify: No valid response.

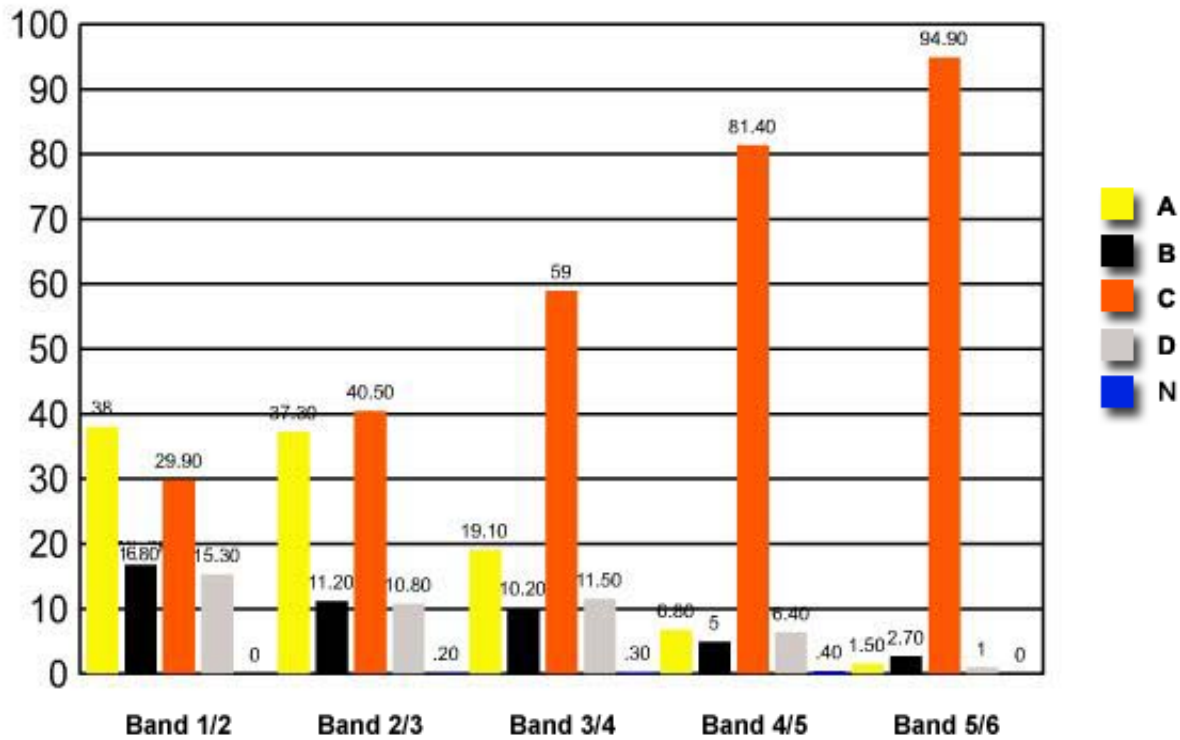
6 Which church was the strongest opponent of conscription in Australia during World War I?

- (A) The Church of England
- (B) The Methodist Church
- ✓ (C) The Catholic Church
- (D) The Presbyterian Church

**Band 1/2 Band 2/3 Band 3/4 Band 4/5 Band 5/6**

|          |              |              |           |              |              |
|----------|--------------|--------------|-----------|--------------|--------------|
| <b>A</b> | 38           | 37.30        | 19.10     | 6.80         | 1.50         |
| <b>B</b> | 16.80        | 11.20        | 10.20     | 5            | 2.70         |
| <b>C</b> | <b>29.90</b> | <b>40.50</b> | <b>59</b> | <b>81.40</b> | <b>94.90</b> |
| <b>D</b> | 15.30        | 10.80        | 11.50     | 6.40         | 1            |
| <b>N</b> | 0            | 0.20         | 0.30      | 0.40         | 0            |

Question 6 : % answers correct by band range

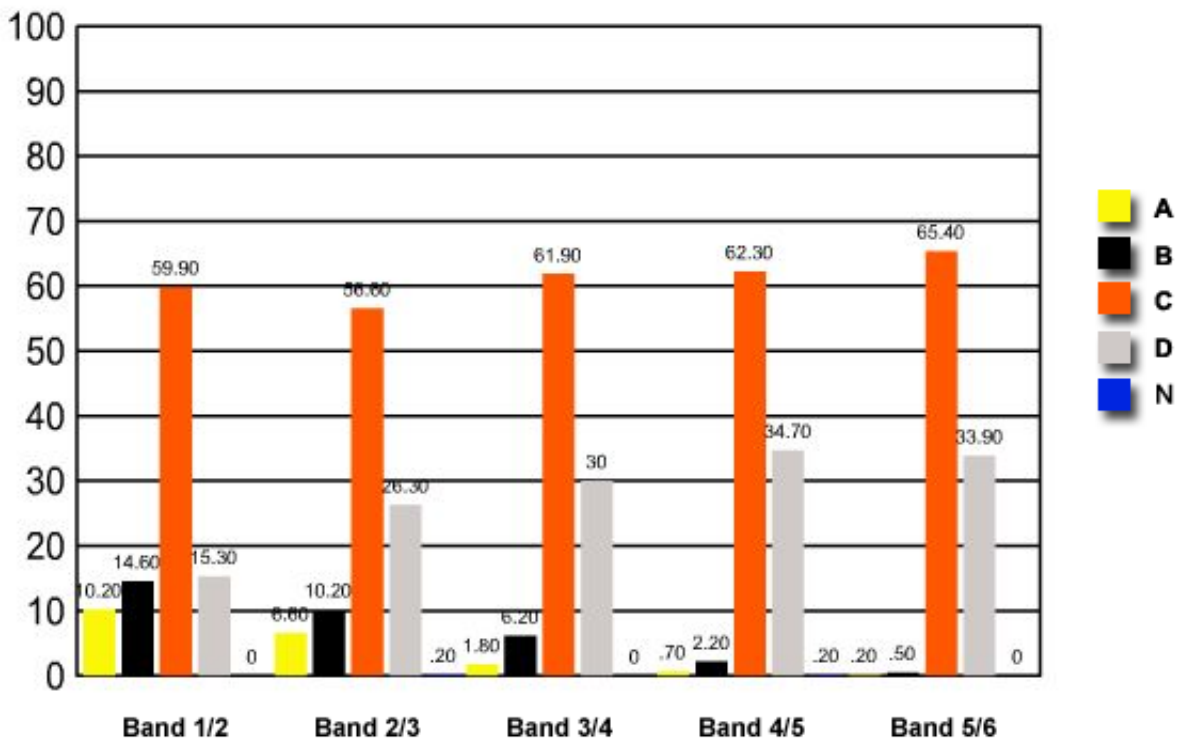


The table and graph show, for the groups of students whose marks in the examination corresponded to the borderline between two bands, what percentages of each group selected the responses A, B, C and D. N is used to identify: No valid response.

- 7 Which of the following best demonstrates Aboriginal spirituality and its connection to the land?
- (A) The reconciliation walk across the Sydney Harbour Bridge
  - (B) The education of Aboriginal children in traditional languages
  - (C) The pursuit of land claims under the Wik judgement in Australian states and territories
  - ✓ (D) The demand to have Aboriginal skeletons returned from museums in the United Kingdom for reburial in Australia

|   | Band 1/2 | Band 2/3 | Band 3/4 | Band 4/5 | Band 5/6 |
|---|----------|----------|----------|----------|----------|
| A | 10.20    | 6.60     | 1.80     | 0.70     | 0.20     |
| B | 14.60    | 10.20    | 6.20     | 2.20     | 0.50     |
| C | 59.90    | 56.60    | 61.90    | 62.30    | 65.40    |
| D | 15.30    | 26.30    | 30       | 34.70    | 33.90    |
| N | 0        | 0.20     | 0        | 0.20     | 0        |

Question 7 : % answers correct by band range



The table and graph show, for the groups of students whose marks in the examination corresponded to the borderline between two bands, what percentages of each group selected the responses A, B, C and D. N is used to identify: No valid response.

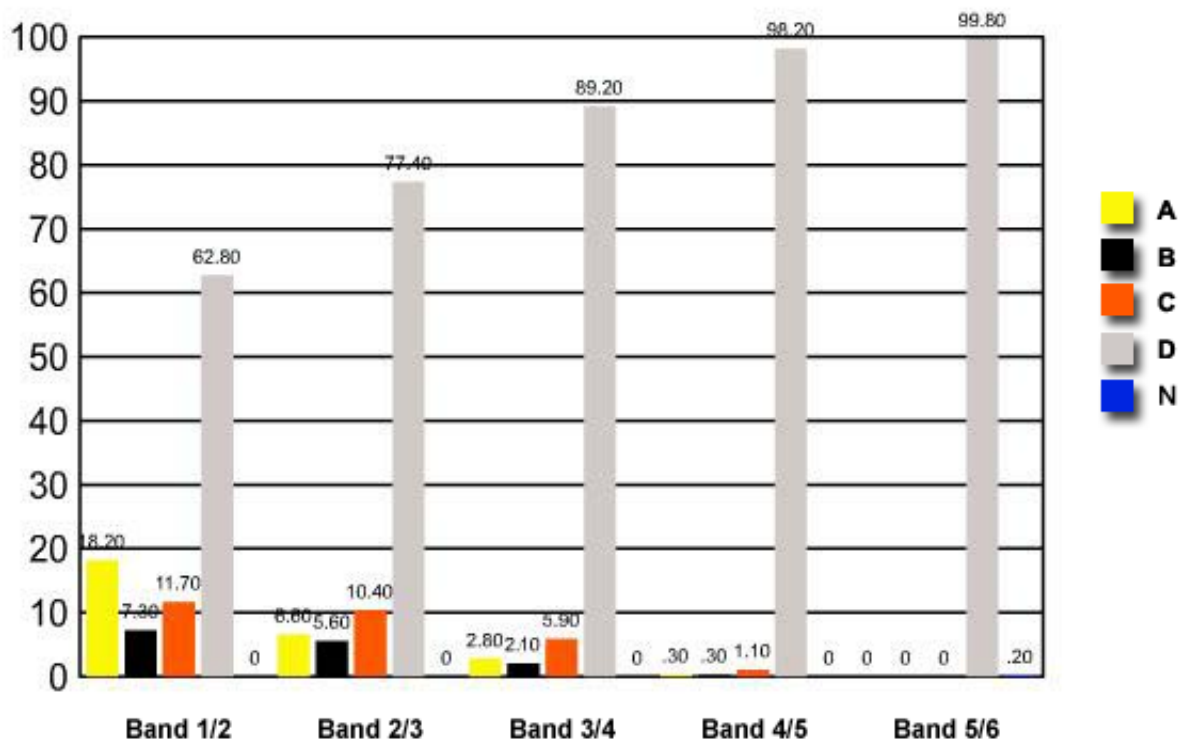
8 People who believe in the power of crystals are best described as supporters of which of the following?

- (A) A mainstream religion
- (B) Economic rationalism
- (C) Environmentalism
- ✓ (D) New Age religions

**Band 1/2   Band 2/3   Band 3/4   Band 4/5   Band 5/6**

|          |              |              |              |              |              |
|----------|--------------|--------------|--------------|--------------|--------------|
| <b>A</b> | 18.20        | 6.60         | 2.80         | 0.30         | 0            |
| <b>B</b> | 7.30         | 5.60         | 2.10         | 0.30         | 0            |
| <b>C</b> | 11.70        | 10.40        | 5.90         | 1.10         | 0            |
| <b>D</b> | <b>62.80</b> | <b>77.40</b> | <b>89.20</b> | <b>98.20</b> | <b>99.80</b> |
| <b>N</b> | 0            | 0            | 0            | 0            | 0.20         |

Question 8 : % answers correct by band range



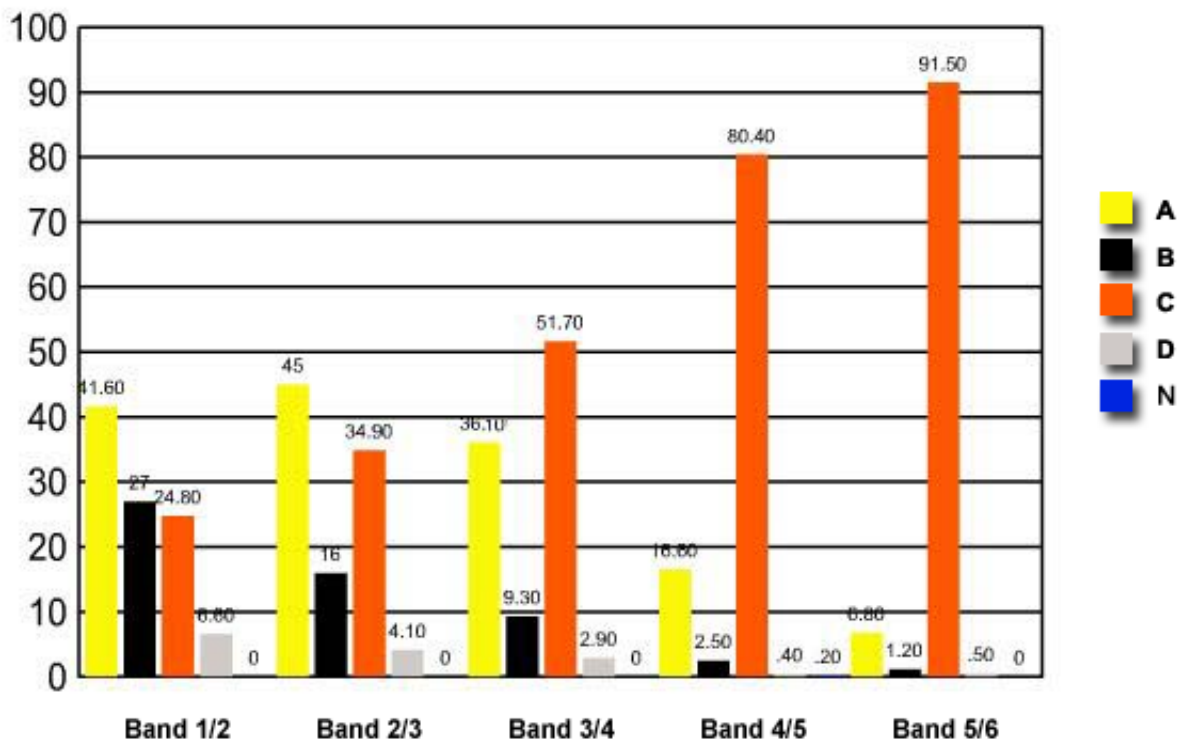
The table and graph show, for the groups of students whose marks in the examination corresponded to the borderline between two bands, what percentages of each group selected the responses A, B, C and D. N is used to identify: No valid response.



- 9 Most Australians of European background did not understand Aboriginal culture and spirituality. Which of the following resulted from this lack of understanding?
- (A) Aboriginal people were ignored.
  - (B) Aboriginal beliefs and practices flourished.
  - ✓ (C) Missionary activity was carried out by Christian churches.
  - (D) A partnership between churches and Aboriginal elders developed.

|          | <i>Band 1/2</i> | <i>Band 2/3</i> | <i>Band 3/4</i> | <i>Band 4/5</i> | <i>Band 5/6</i> |
|----------|-----------------|-----------------|-----------------|-----------------|-----------------|
| <i>A</i> | 41.60           | 45              | 36.10           | 16.60           | 6.80            |
| <i>B</i> | 27              | 16              | 9.30            | 2.50            | 1.20            |
| <i>C</i> | 24.80           | 34.90           | 51.70           | 80.40           | 91.50           |
| <i>D</i> | 6.60            | 4.10            | 2.90            | 0.40            | 0.50            |
| <i>N</i> | 0               | 0               | 0               | 0.20            | 0               |

Question 9 : % answers correct by band range



The table and graph show, for the groups of students whose marks in the examination corresponded to the borderline between two bands, what percentages of each group selected the responses A, B, C and D. N is used to identify: No valid response.

10 Which of the following religious traditions had the greatest rate of membership increase between 1991 and 1996?

| Religious Affiliation in Australia |            |            |
|------------------------------------|------------|------------|
|                                    | 1991       | 1996       |
| Buddhism                           | 139 795    | 199 812    |
| Christianity                       | 12 465 644 | 12 582 764 |
| Islam                              | 147 507    | 200 885    |
| Judaism                            | 74 266     | 79 805     |

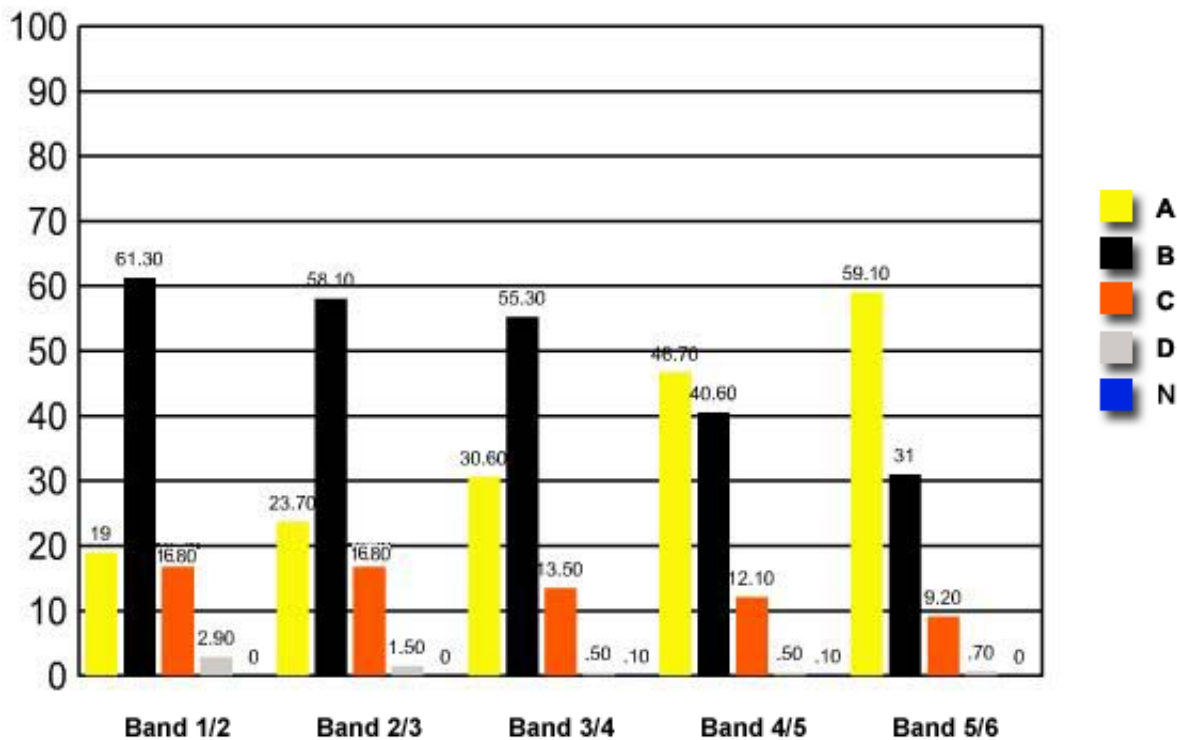
Australian Census data

- ✓ (A) Buddhism
- (B) Christianity
- (C) Islam
- (D) Judaism

Band 1/2 Band 2/3 Band 3/4 Band 4/5 Band 5/6

|   | Band 1/2 | Band 2/3 | Band 3/4 | Band 4/5 | Band 5/6 |
|---|----------|----------|----------|----------|----------|
| A | 19       | 23.70    | 30.60    | 46.70    | 59.10    |
| B | 61.30    | 58.10    | 55.30    | 40.60    | 31       |
| C | 16.80    | 16.80    | 13.50    | 12.10    | 9.20     |
| D | 2.90     | 1.50     | 0.50     | 0.50     | 0.70     |
| N | 0        | 0        | 0.10     | 0.10     | 0        |

Question 10 : % answers correct by band range



The table and graph show, for the groups of students whose marks in the examination corresponded to the borderline between two bands, what percentages of each group selected the responses A, B, C and D. N is used to identify: No valid response.