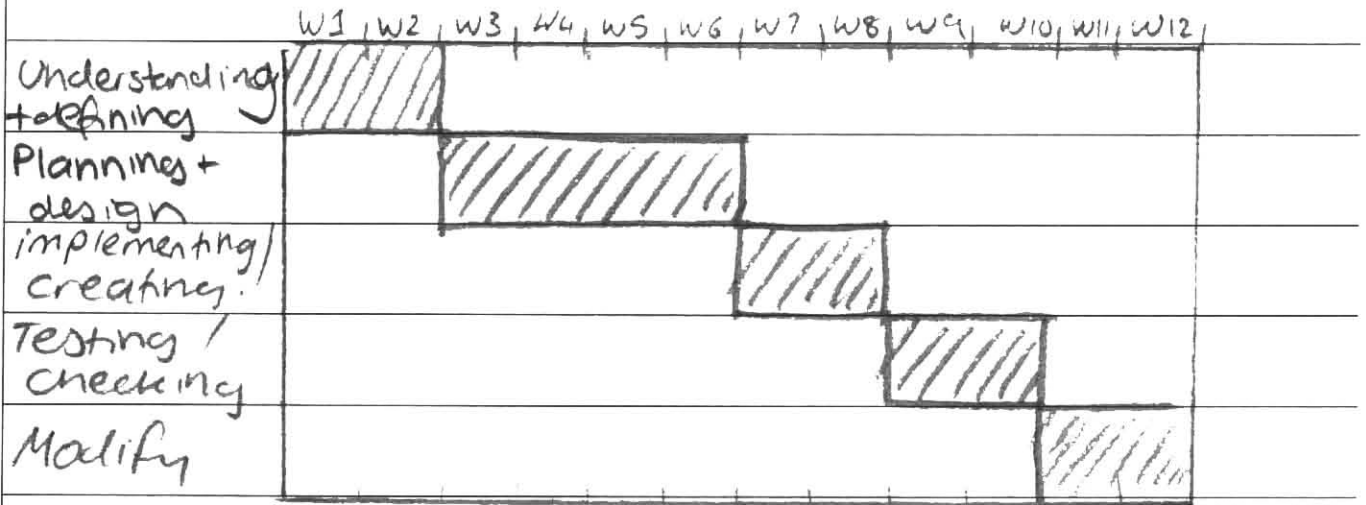


221

(a)

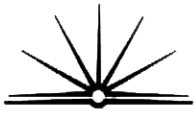


(Above) Gantt chart documenting the scheduling of the project. Often the shaded areas may overlap.

In the case above it shows the proportional time in which the project takes to be completed. On the left are the different stages of the Development, and along the top of the table are the amount of weeks which ~~to~~ give the time frame of the project.

(b)

The outsourced programmers hired to modify the system will need to know all of the different components to the

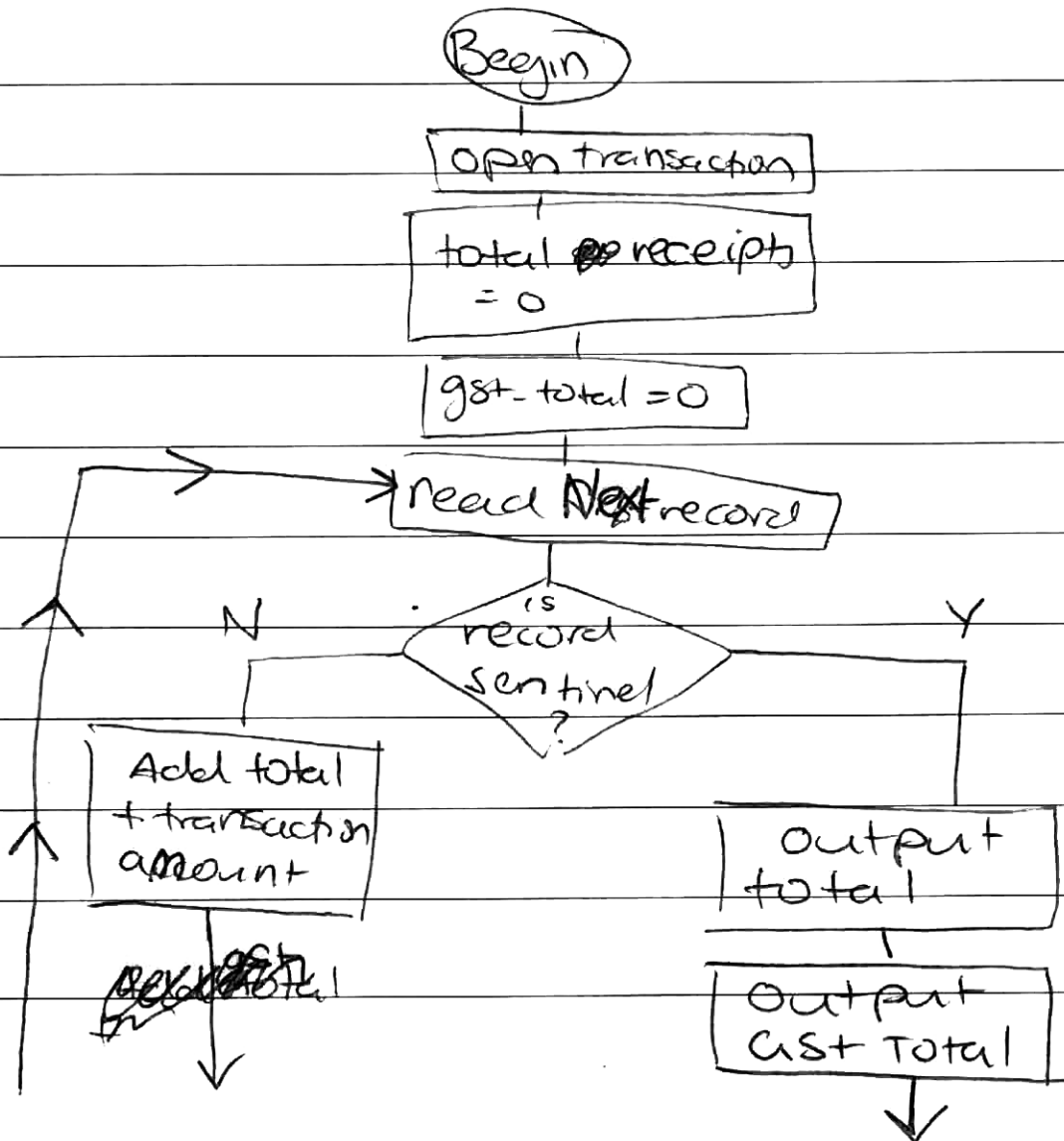
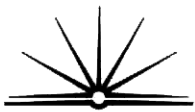


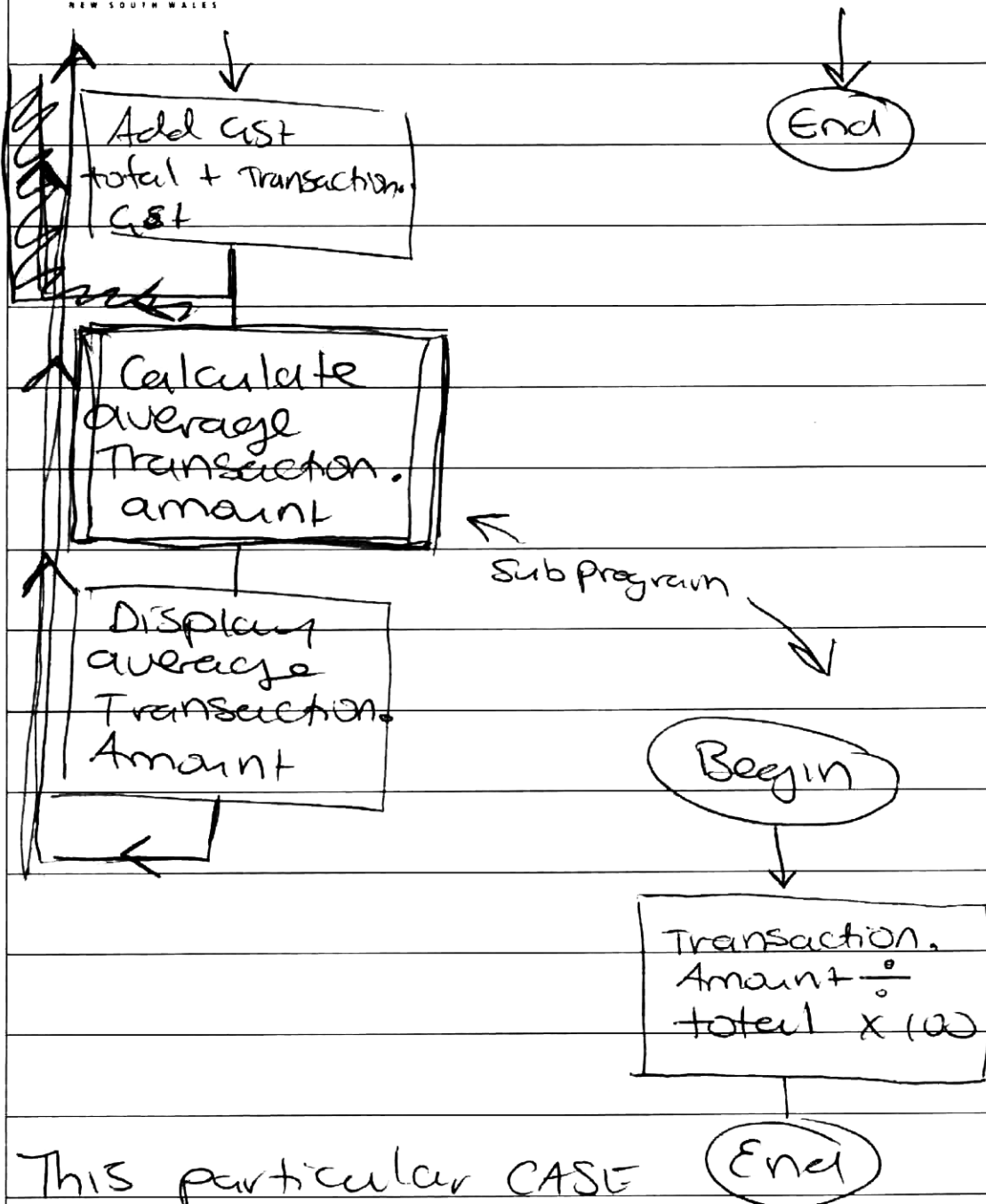
System they are modifying. Thus, they will need to know the different variables within the program, which are outlined in detail in data dictionaries. Data dictionaries ~~also~~ list the name of the variable eg intvar, the data type eg integer (numerical), the variable's scope - either local/global or private/public, the length of the variable and its description.

All of these different components will allow the new programmers to understand the use of each variable.

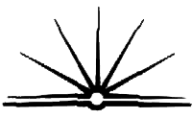
The test data will demonstrate the functionality of each component of the program, throughout different stages of testing.

The test data will inform the programmers of elements of the program which may need modification as errors may be made evident through that test data.





This particular CASE **End** tool stores the different + versions + lines of code in each modification so that there is evidence of the last + modification and the amount of lines ^{of code} that have been added to each version.



BEGIN

Scan Sequential-File.

IF code-lines $>$ 11000 then

Store in File - Results

~~ENDIF~~

ENDIF

END