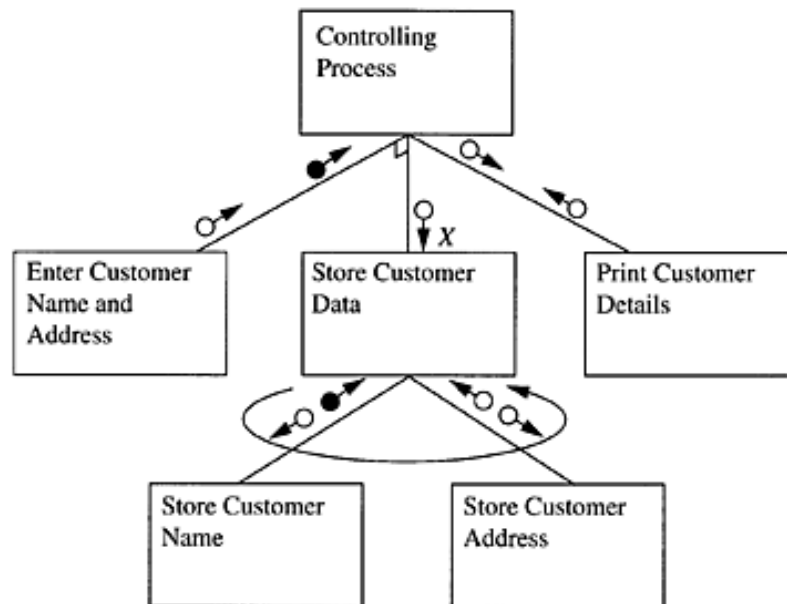


Use the diagram to answer Questions 13 and 14.



- 13 In the diagram, what does the symbol at *X* represent?
- (A) A flag recording that the data has been passed to Store Customer Data
 - (B) The data customer name only has been passed to Store Customer Data
 - ✓ (C) The data customer name and address has been passed from Controlling Process
 - (D) A flag recording that the customer name only has been passed from Controlling Process

Question 13 : % answers correct by band range

