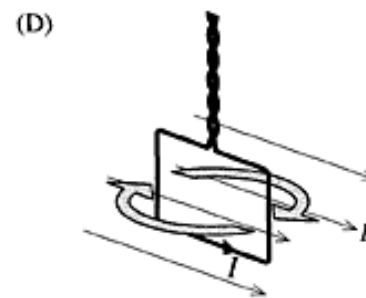
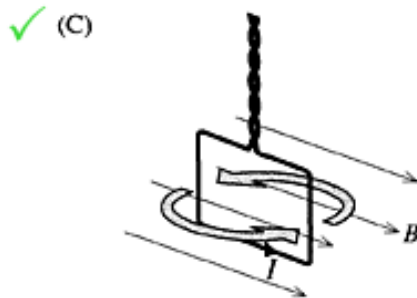
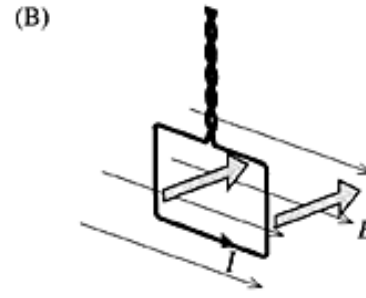
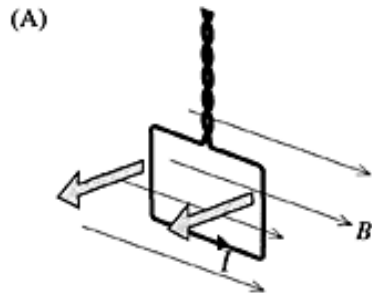


- 8 A single-turn coil of wire is placed in a uniform magnetic field B , so that the plane of the coil is parallel to the field, as shown in the diagrams. The coil can move freely.

An electric current I flows around the coil in the direction shown.

In which direction does the coil begin to move as a consequence of the interaction between the external magnetic field and the current?



Question 8 : % answers correct by band range

