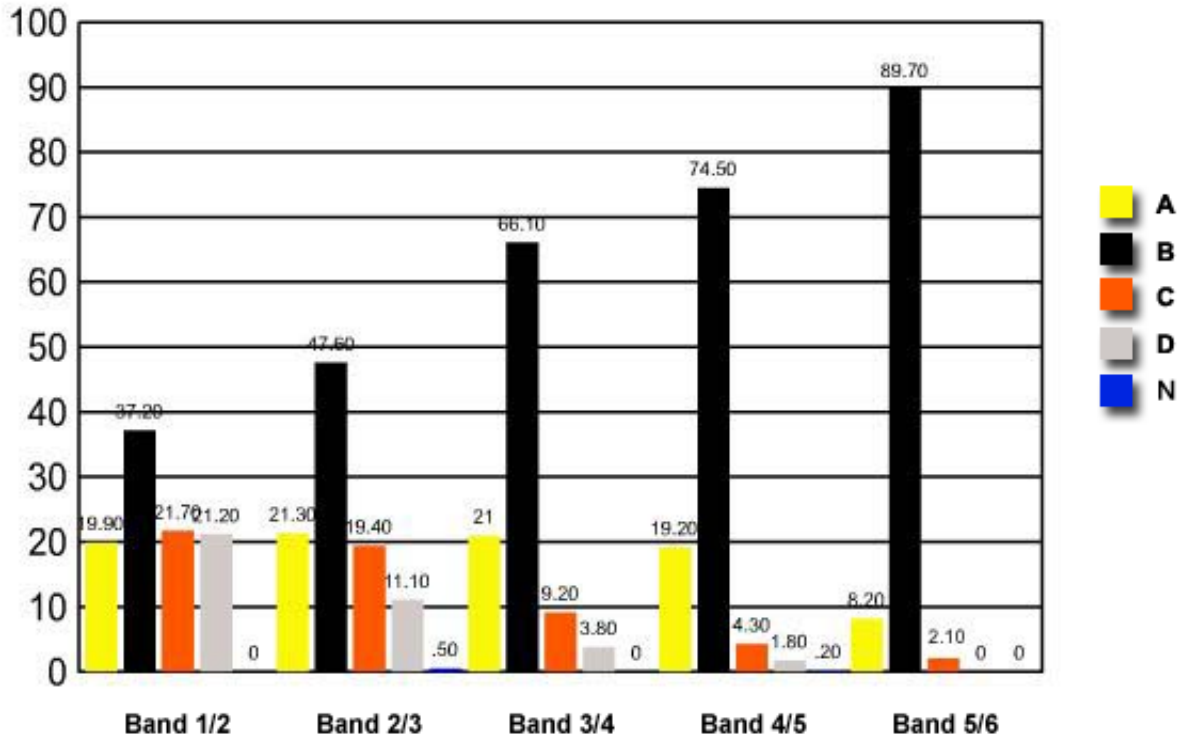


7 Which of the following government initiatives best represents social justice principles in action?

- (A) Bulk billing
- ✓ (B) Pharmaceutical benefits scheme
- (C) Private health insurance rebate
- (D) Private health insurance lifetime cover

	<i>Band 1/2</i>	<i>Band 2/3</i>	<i>Band 3/4</i>	<i>Band 4/5</i>	<i>Band 5/6</i>
A	19.90	21.30	21	19.20	8.20
B	37.20	47.60	66.10	74.50	89.70
C	21.70	19.40	9.20	4.30	2.10
D	21.20	11.10	3.80	1.80	0
N	0	0.50	0	0.20	0

Question 7 : % answers correct by band range



The table and graph show, for the groups of students whose marks in the examination corresponded to the borderline between two bands, what percentages of each group selected the responses A, B, C and D. N is used to identify: No valid response.