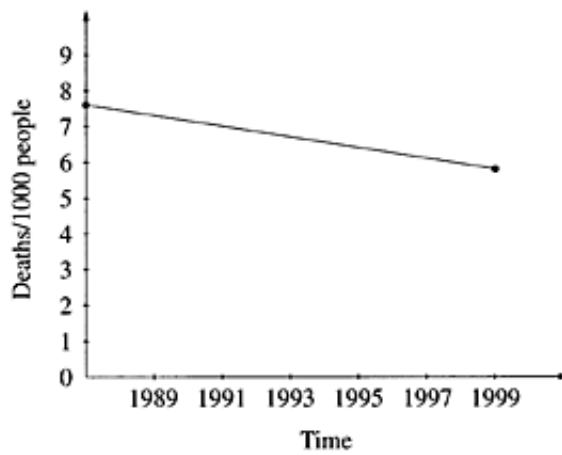


3 The graph shows the trend in the Australian mortality rate.



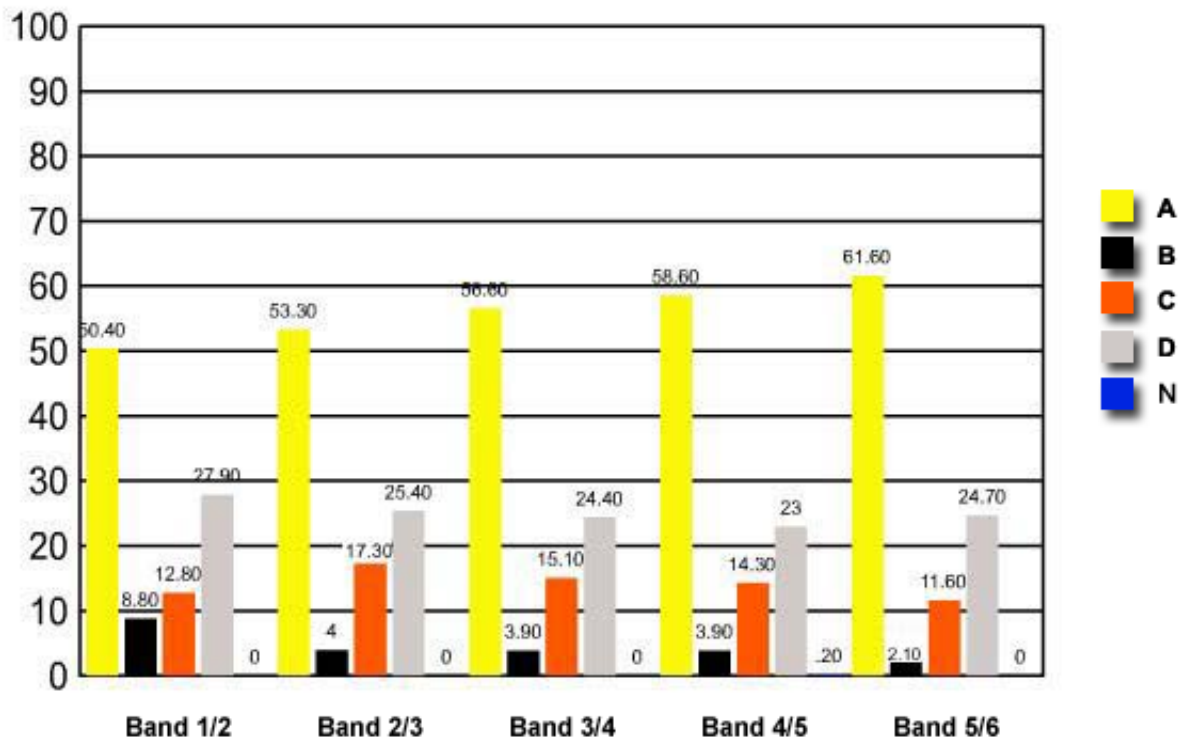
Which health promotion initiative has contributed most to this trend?

- ✓ (A) The anti-smoking campaign
- (B) Blood-sugar level testing
- (C) The melanoma awareness program
- (D) Workplace safety legislation

Band 1/2 Band 2/3 Band 3/4 Band 4/5 Band 5/6

A	50.40	53.30	56.60	58.60	61.60
B	8.80	4	3.90	3.90	2.10
C	12.80	17.30	15.10	14.30	11.60
D	27.90	25.40	24.40	23	24.70
N	0	0	0	0.20	0

Question 3 : % answers correct by band range



The table and graph show, for the groups of students whose marks in the examination corresponded to the borderline between two bands, what percentages of each group selected the responses A, B, C and D. N is used to identify: No valid response.