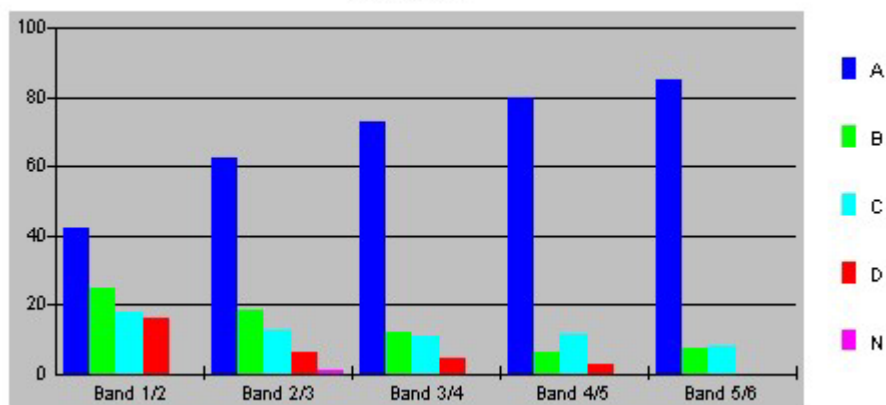


Question 9

Choice	Band 1/2	Band 2/3	Band 3/4	Band 4/5	Band 5/6
A	42.1	62.2	73	79.8	85
B	24.6	18.2	12	6.3	7.1
C	17.5	12.4	10.6	11.2	8
D	15.8	6.2	4.4	2.6	0
N	0	0.9	0	0	0

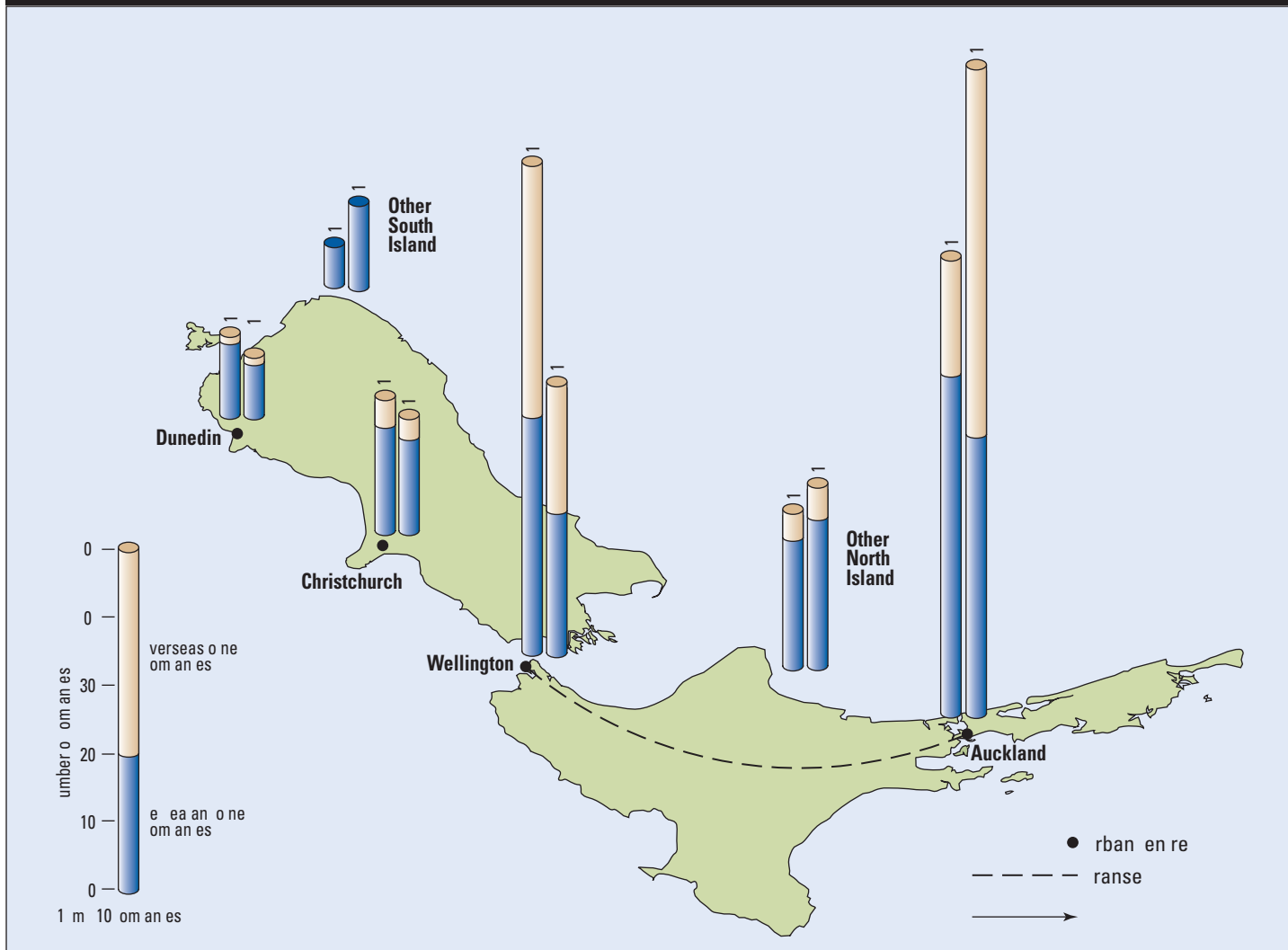
Question 9



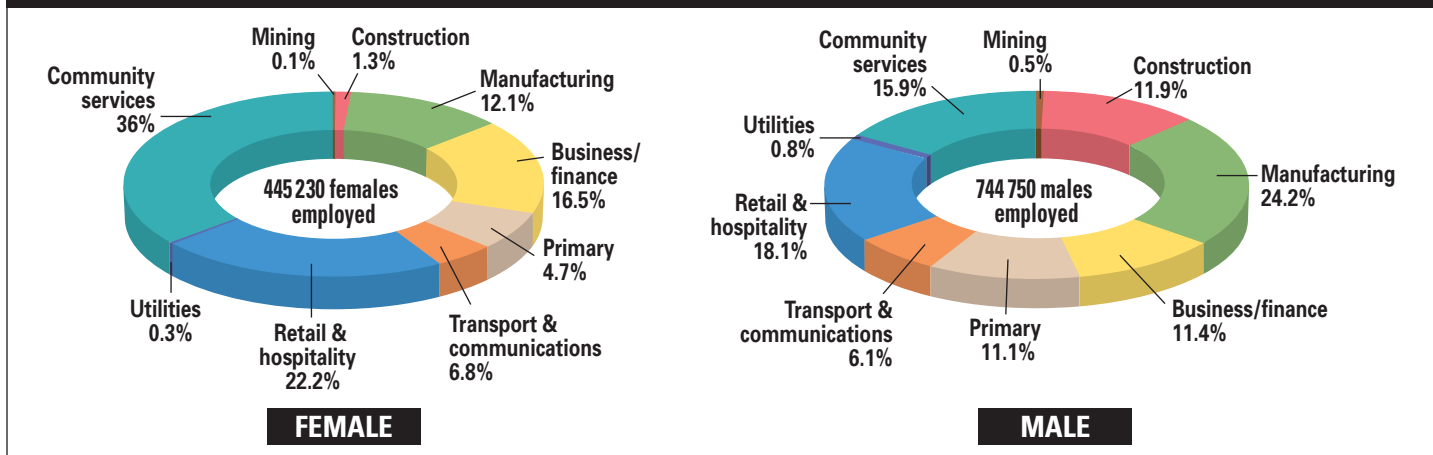
The table and graph show, for the groups of students whose marks in the examination corresponded to the borderline between two bands, what percentages of each group selected the responses A, B, C and D. N is used to identify: No valid response.

NEW ZEALAND

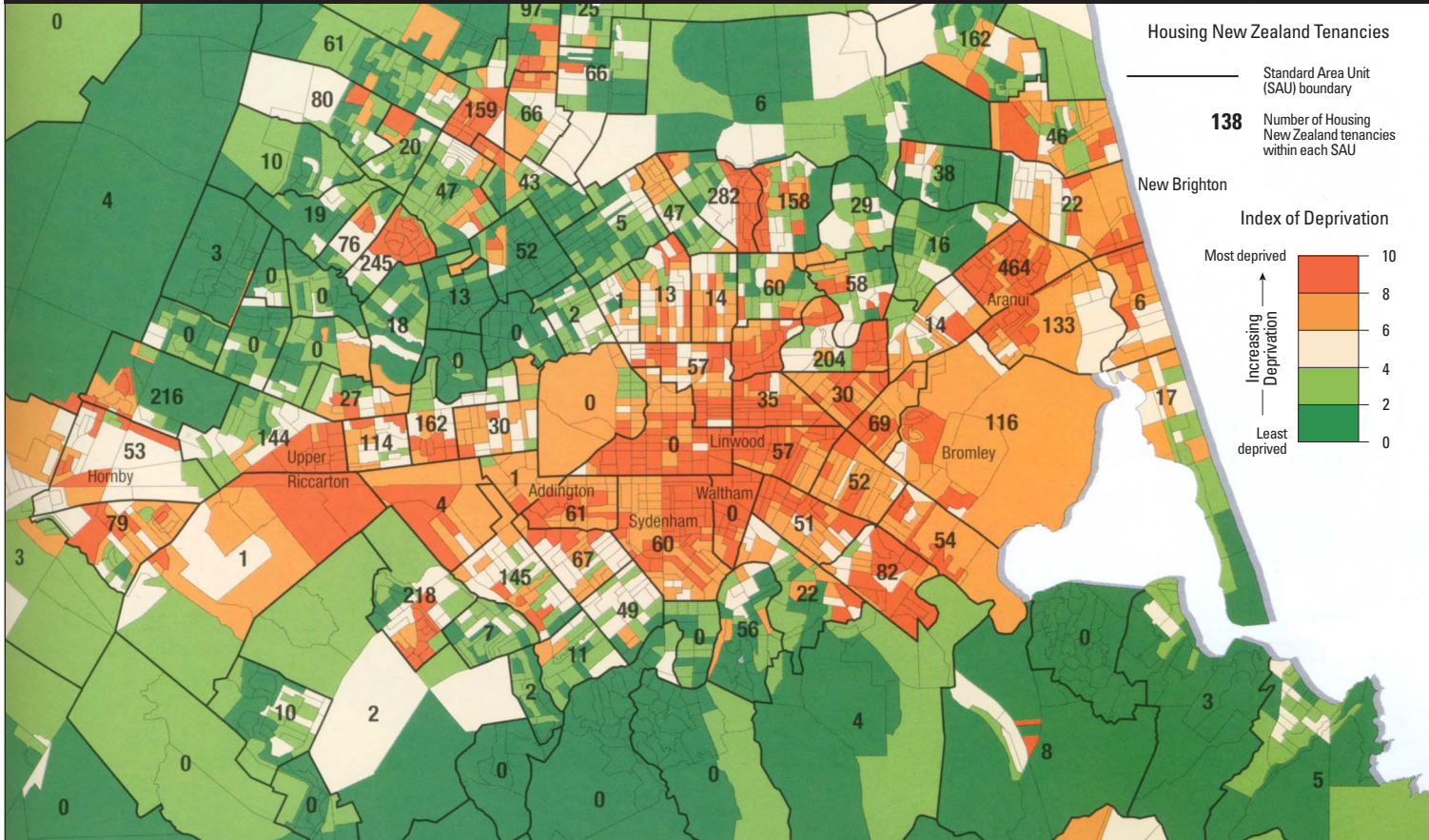
Source A — The Top 200 Companies, 1987 and 1997



Source B — Full-time Employment by Industry, 1996



Source C — Index of Deprivation, Christchurch City by Meshblock 1996 Census



Page 2

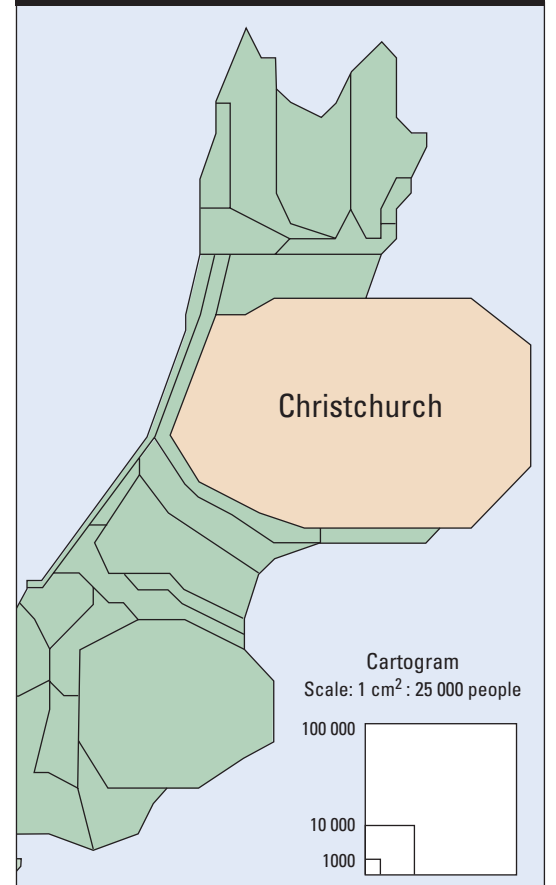
Source D — Deprivation

The Christchurch Urban Area demonstrates a clear geographical spread based on the Index of Deprivation (IOD).

Deprivation is the state of being worse off than the society in which one lives. The IOD is based on:

- access to telephone
- income from government benefits
- unemployment
- income level
- access to a motor vehicle
- single parent families
- low qualifications
- level of house ownership
- living space

Source E — Cartogram



Source F — Topographic Map – Christchurch

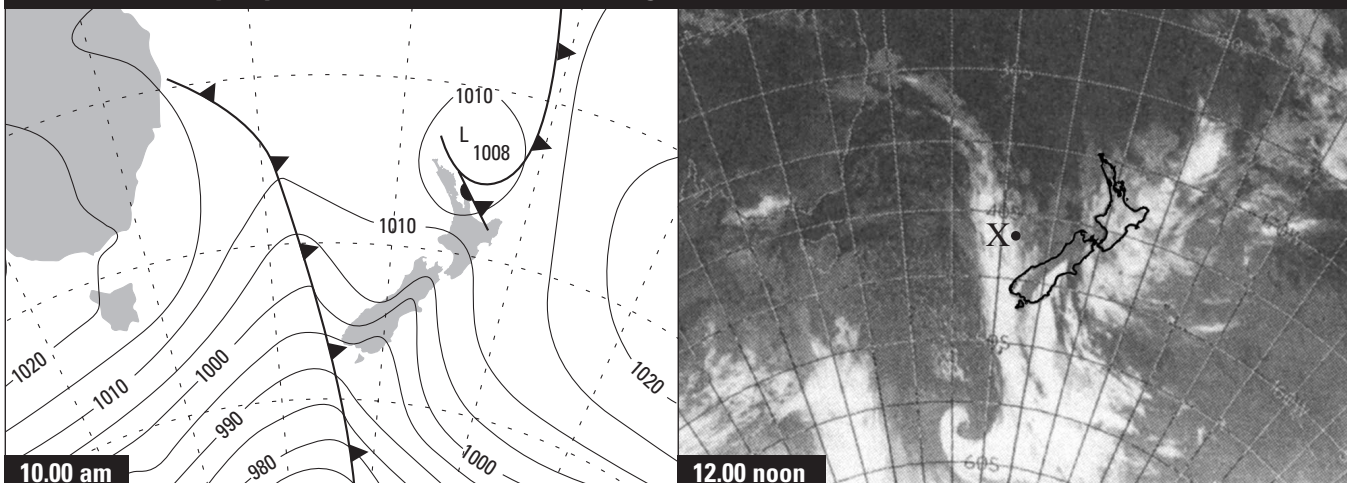


Page 3

KEY for Source F

National State Highway	
Provincial State Highway	
Roads: sealed	
unsealed	
Foot track	
Walkways	
Forested areas:	
Plantation / Bush	
Swamp	
Mud flat	
Sandy beach	
Lighthouse, Beacon	
Hotel (accommodation)	
Camping ground	
Picnic area	
Maori Pa site	
Lookout point	
Railway line, station	
Scale 1 : 100 000	
Contour interval 50 m	

Source G — Synoptic Chart and Satellite Image for 2 December 2000



Source H — Lyttelton Harbour

