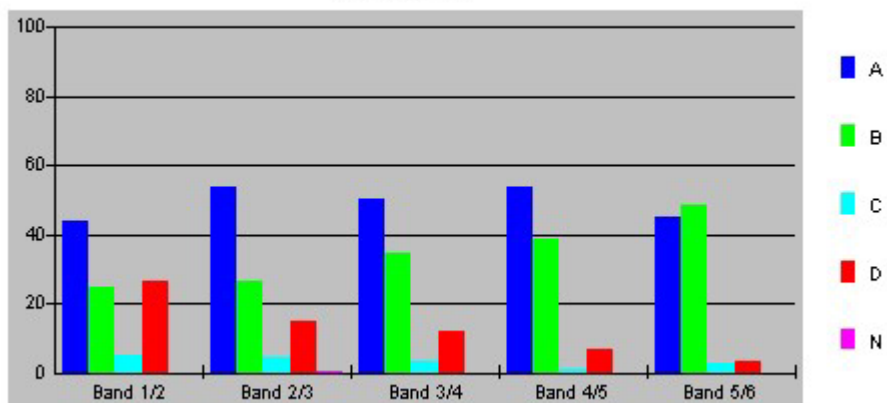


Question 11

Choice	Band 1/2	Band 2/3	Band 3/4	Band 4/5	Band 5/6
A	43.9	53.8	50.4	53.9	45.1
B	24.6	26.2	34.6	38.6	48.7
C	5.3	4.4	3.2	0.9	2.7
D	26.3	15.1	11.8	6.6	3.5
N	0	0.4	0	0	0

Question 11

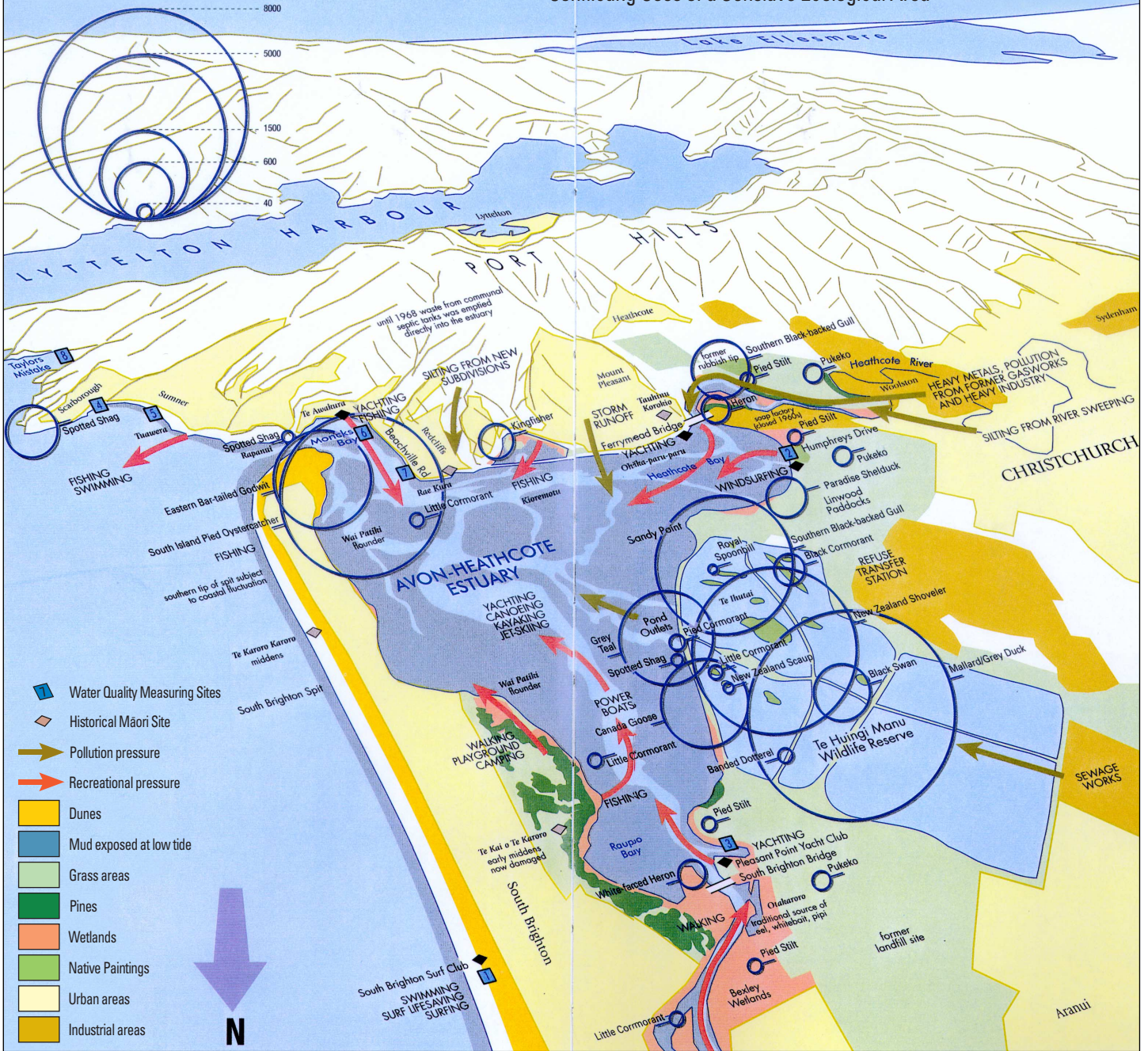


The table and graph show, for the groups of students whose marks in the examination corresponded to the borderline between two bands, what percentages of each group selected the responses A, B, C and D. N is used to identify: No valid response.

Source I — Resource Management of the Avon-Heathcote Estuary, 2000

Selected Bird Numbers January average
1987–1991 Roosting or nesting sites

The Avon-Heathcote Estuary:
Conflicting Uses of a Sensitive Ecological Area



Source J — Net Internal Migration: Four Main Urban Areas 1991–96

Source K — Sediment Core

