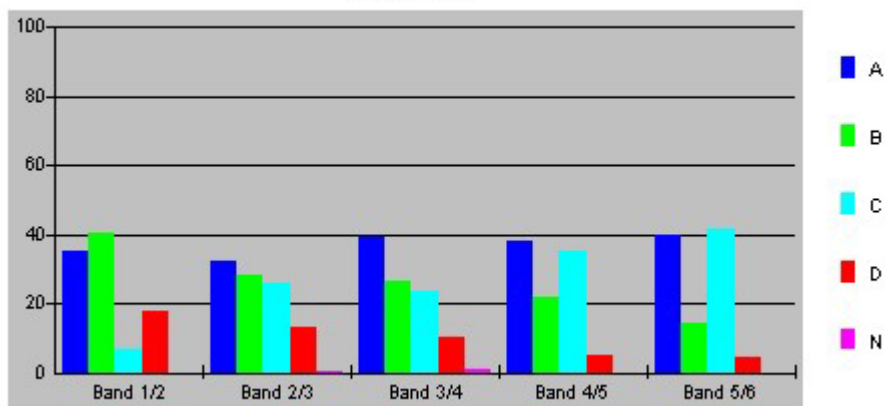


Question 1

Choice	Band 1/2	Band 2/3	Band 3/4	Band 4/5	Band 5/6
A	35.1	32	39.3	38	39.8
B	40.4	28.4	26.3	21.9	14.2
C	7	25.8	23.6	34.9	41.6
D	17.5	13.3	10.1	5.2	4.4
N	0	0.4	0.7	0	0

Question 1

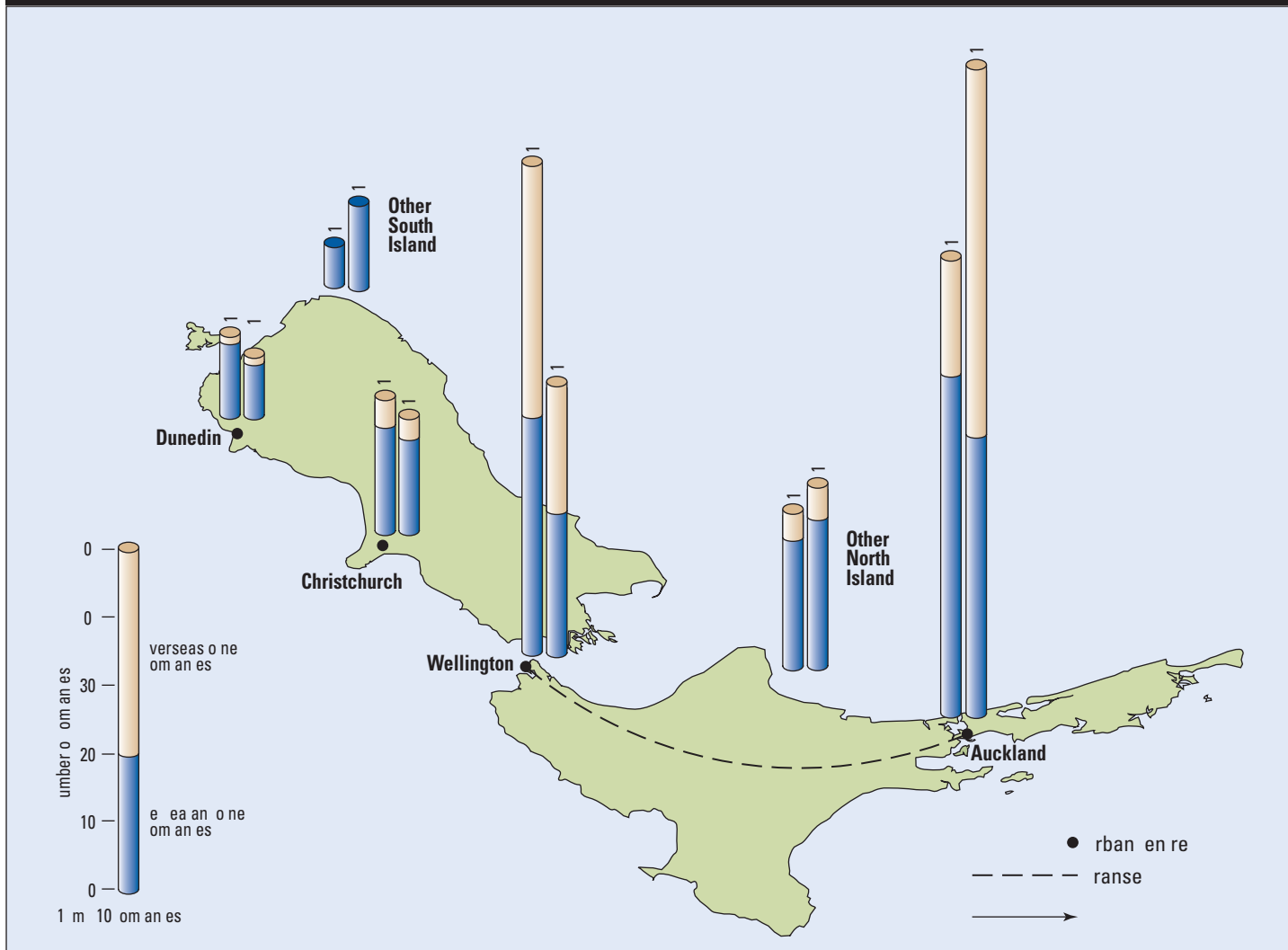


The table and graph show, for the groups of students whose marks in the examination corresponded to the borderline between two bands, what percentages of each group selected the responses A, B, C and D. N is used to identify: No valid response.

Geography Stimulus Booklet

NEW ZEALAND

Source A — The Top 200 Companies, 1987 and 1997



Source B — Full-time Employment by Industry, 1996

