

**Question 22** (6 marks)

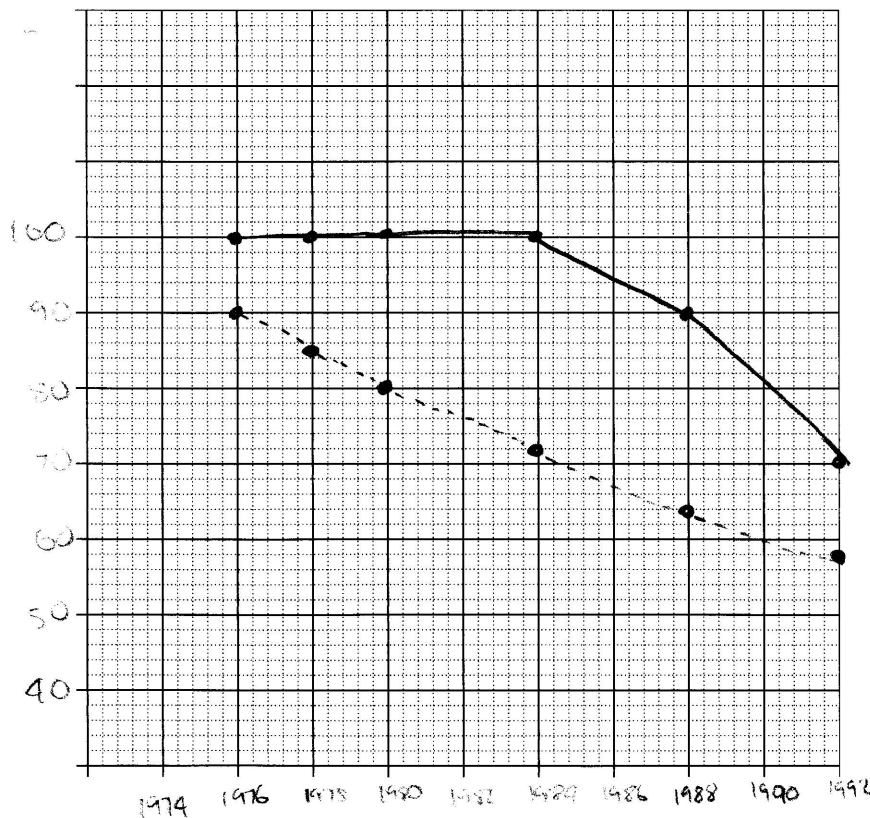
The following data were recorded about the effectiveness of antimalarial drugs for treating malaria.

Year	Effectiveness of drug (%)	
	Mefloquine	Quinine
1976	100	90
1978	100	85
1980	100	80
1984	100	72
1988	90	64
1992	70	58

(a) Graph the data on the grid.

*effectiveness of drug %*

3



Key  
 — = Mefloquine  
 - - - = Quinine

Question 22 continues on page 11

Question 22 (continued)

- (b) Use these data to explain the impact of human processes on biodiversity.

3

~~meff~~ mefloquine has the stronger effect as opposed to quinine the other antimalarial drug for treating malaria. This is interpreted in both the table and the graph.

End of Question 22