

- (i) The organ of Corti's function is to project and reflect sound through the inner ear all the way to the ear drum.
- (ii) The relationship between wavelength, pitch and frequency is that they all measure the different levels of sound, nanometers, decibels, etc.
- (iii) Animals use their voice box to produce sound, whether it be barking or screeching. Insects such as a grasshopper use its feelers to produce sound by rubbing them together. Birds use their wings to ~~emit~~ emit sound by flapping them in a ~~fast~~ fast or slow movement.



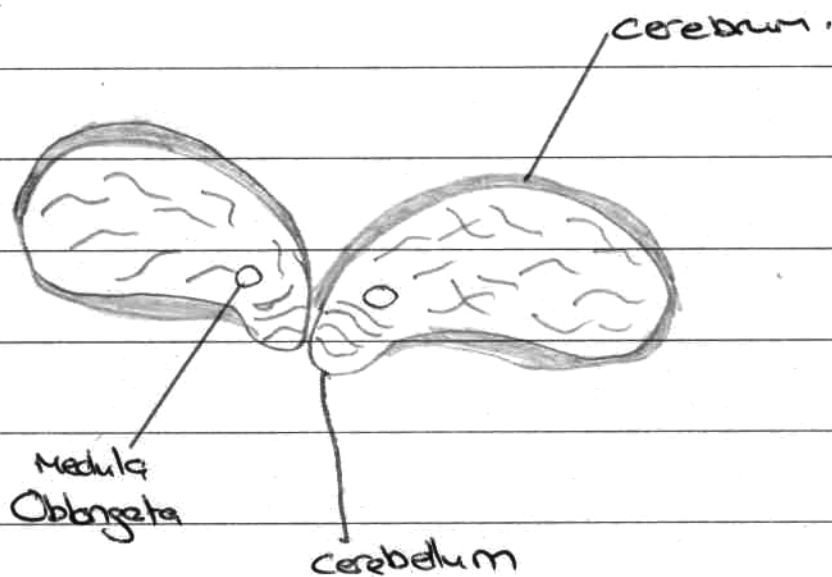
(Bi)

cerebrum - soft tissue ~~at the front~~
~~side~~ surrounding the brain

Cerebellum - is the soft rigid looking
part at the back, base of the
brain.

Medulla oblongata - a small pea shaped
structure found in the middle of
the brain.

(ii)





(Ci)

(Cii) The lower the thickness of the lens is (mm) the further the focal length goes (cm).

(iii) At different distances the focus of an object can be clearer or distorted.

At long distances objects seem to be smaller than what they appear as this is how the eye focuses.

At closer objects are normal as we don't have to focus as much.



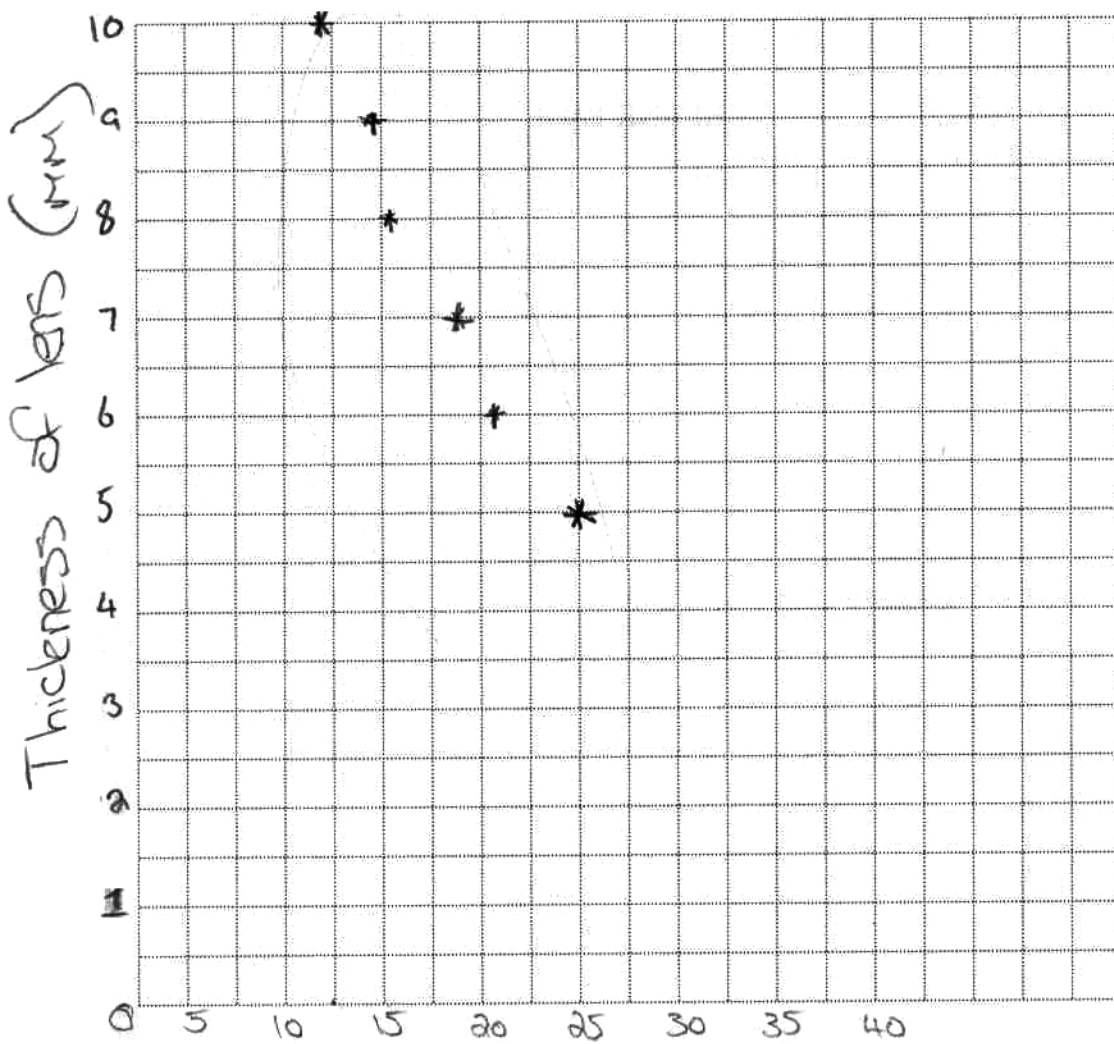
When the retina first interprets a message it is upside down, this is then projected into the back of the eye and mirrored reflecting the image as how we portray it.

The eye mainly focuses on light ~~so~~ so this is another way of how it focuses.

2002 HIGHER SCHOOL CERTIFICATE EXAMINATION
Biology

This page is to be detached, completed and attached to the inside front cover of your writing booklet for the option question you have attempted.

Lens measurement.



Focal length (cm)