

Marks

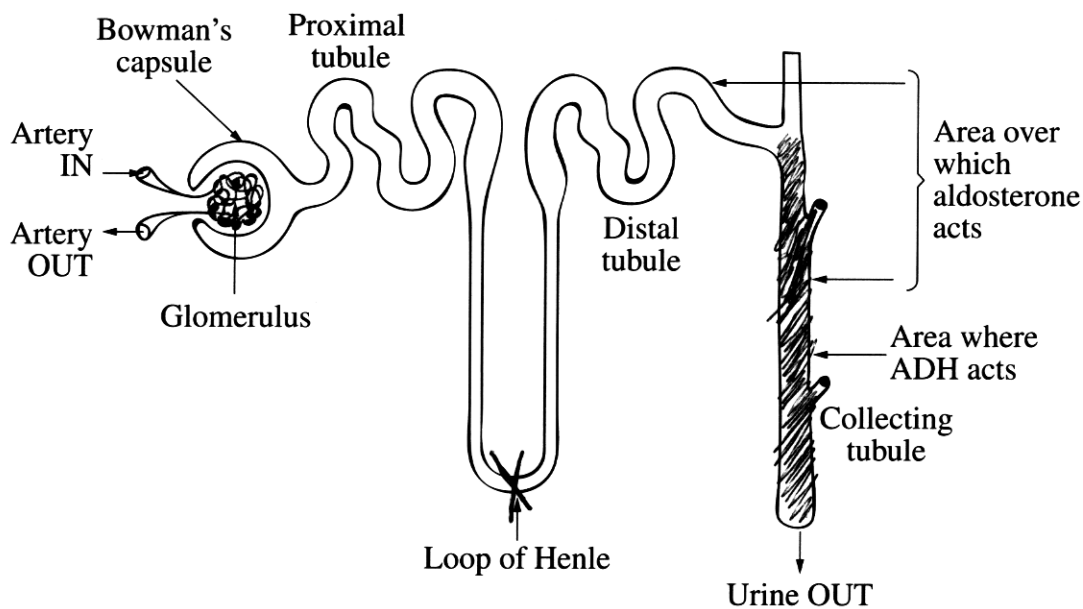
Question 23 (6 marks)

The diagram represents a nephron which is the functional unit of the kidney.

Nephrons make urine by:

- filtering small molecules and ions from the blood;
- reabsorbing the needed amounts of useful materials.

Surplus or waste molecules and ions flow out as urine.



- (a) Identify the area where filtration occurs, by marking it with an X on the diagram. **1**
- (b) Identify the area where reabsorption occurs, by shading it on the diagram. **1**
- (c) Discuss the importance of hormone replacement therapy for people who cannot secrete aldosterone. **4**

It is important because if you can't secrete aldosterone & you don't take HRT - your body won't function properly & can cause complications. So if you use replacement therapy your body should run normally.

.....

.....