

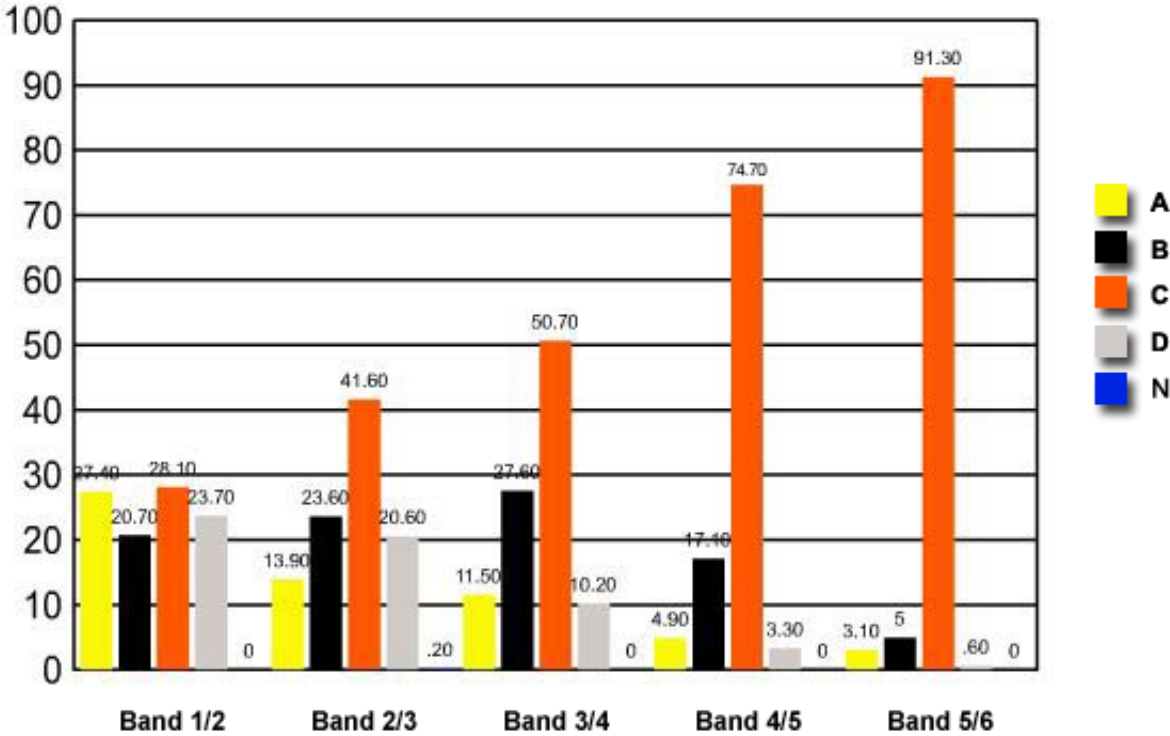
6 Metabolic processes in cells produce waste substances. These wastes are constantly removed from the cells.

Why is waste removal essential for metabolic activity to continue?

- (A) Waste products prevent the entry of essential nutrients into the cell.
- (B) Metabolism of waste products produces chemicals that kill cells.
- ✓ (C) Waste products alter the internal chemical environment of the cells and the metabolic processes would stop.
- (D) Retention of waste products causes cells to lose water by osmosis and they become dehydrated.

	<i>Band 1/2</i>	<i>Band 2/3</i>	<i>Band 3/4</i>	<i>Band 4/5</i>	<i>Band 5/6</i>
A	27.40	13.90	11.50	4.90	3.10
B	20.70	23.60	27.60	17.10	5
C	28.10	41.60	50.70	74.70	91.30
D	23.70	20.60	10.20	3.30	0.60
N	0	0.20	0	0	0

Question 6 : % answers correct by band range



The table and graph show, for the groups of students whose marks in the examination corresponded to the borderline between two bands, what percentages of each group selected the responses A, B, C and D. N is used to identify: No valid response.