

4 The following paragraph describes a body response.

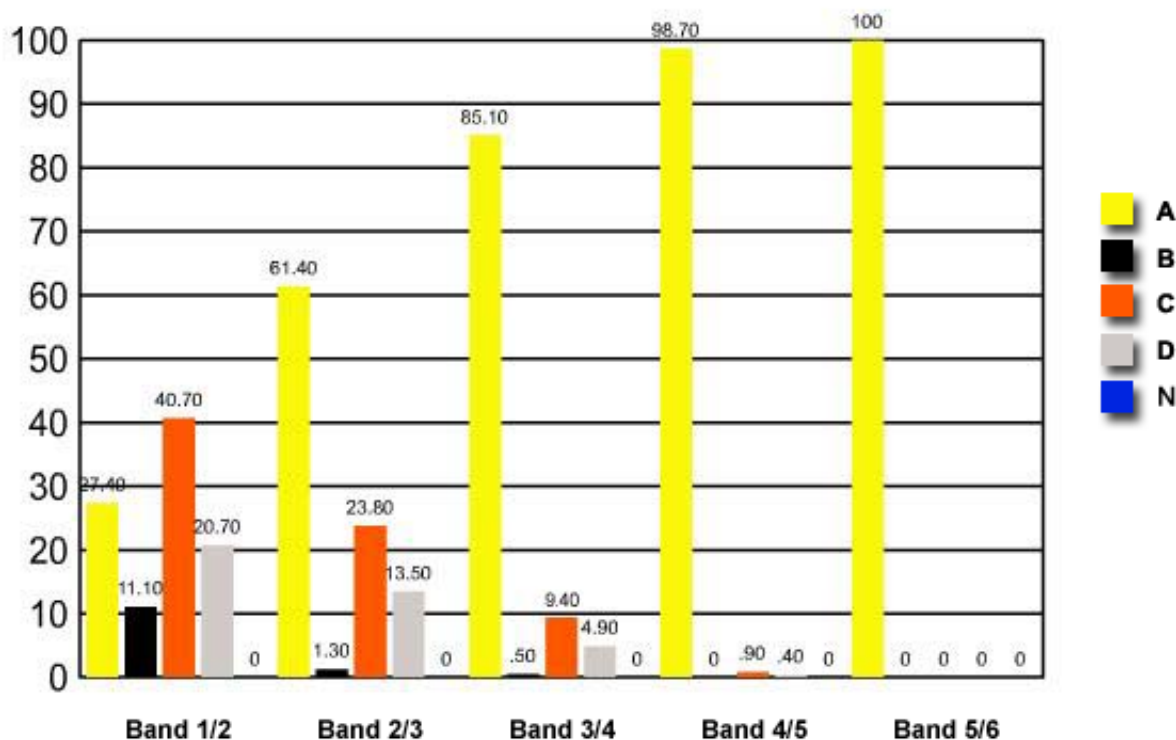
The response is protective, and it makes nearby blood vessels leak. Plasma and white cells move into the affected area, diluting and destroying the infectious agent. This is why the infection site swells, reddens and feels hot. Although we tend to think of this response in terms of annoyance, soreness and pain, it is actually a beneficial response.

What response does this paragraph describe?

- ✓ (A) Inflammation
- (B) Cell differentiation
- (C) The action of antibodies
- (D) The activation of helper T-cells

	Band 1/2	Band 2/3	Band 3/4	Band 4/5	Band 5/6
A	27.40	61.40	85.10	98.70	100
B	11.10	1.30	0.50	0	0
C	40.70	23.80	9.40	0.90	0
D	20.70	13.50	4.90	0.40	0
N	0	0	0	0	0

Question 4 : % answers correct by band range



The table and graph show, for the groups of students whose marks in the examination corresponded to the borderline between two bands, what percentages of each group selected the responses A, B, C and D. N is used to identify: No valid response.