

2001 HIGHER SCHOOL CERTIFICATE EXAMINATION

Biology

Section I (continued)

Part B – 60 marks

Attempt Questions 16–28

Allow about 1 hour and 45 minutes for this part

Answer the questions in the spaces provided.

Marks

Question 16 (4 marks)

Genetically modified food on menu

Australians are growing more accepting of genetically modified (GM) food, a federal agency survey has found.

This survey found that 44 per cent of Australians now believe GM food would become more widely accepted and less risky in the next few years.

An earlier survey revealed that people thought the risks outweighed the benefits, but that the situation would change.

- (a) State ONE opinion held by Australians about genetically modified food, according to this article. **1**

People thought the risks outweighed the benefits, but the situation would change.

- (b) Justify ONE piece of information you would need in order to determine the validity of the survey results. **3**

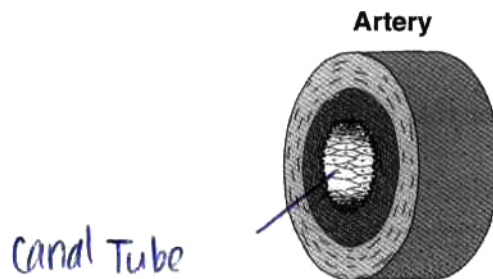
Australians are growing more accepting of genetically modified foods, 44% now believe Genetically modified food would become more widely accepted and less risky in the next few years, the situation would change.

Marks

Question 17 (3 marks)

- (a) Label, on the diagram, ONE structural feature of the artery shown.

1



- (b) How does the labelled feature relate to the artery's function?

2

This tube is specially designed to be this small in diameter for thinner wall can push, contract the blood up through the tube for the heart to keep it's constant heart beat.

Question 18 (5 marks)

- (a) Name TWO products extracted from donated blood, and state their uses.

4

Red blood cells = To give to people who need blood transfusions.

- (b) Propose ONE reason why scientists have now begun to develop artificial blood.

1

Because less and less people are giving blood now days. So they need to fake it.